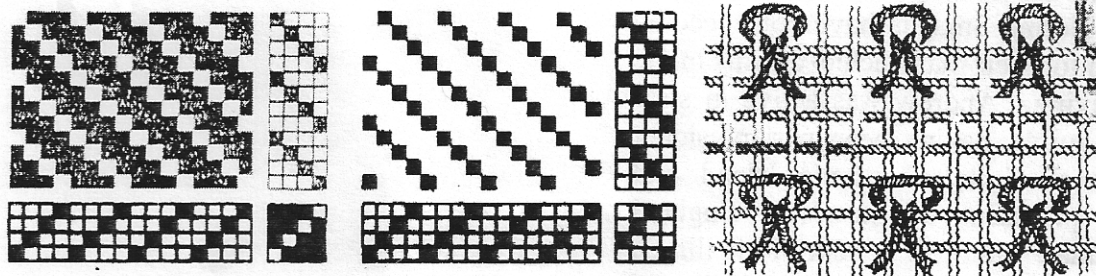


A SMALL BÅTRYA FROM LOFOTEN

By Janet Meany



Illustrations courtesy *Båtrya* by Ellen Kjellmo

Warp: 2 ply 100% Spælsau wool, green and beige

Weft: 2 ply Spælsau wool, green

Knots: 2 ply Spælsau wool, green, beige, blue-green, rust and a heavier 100% Spælsau wool in beige.

Sett: 15-17 ends per inch

Width in the reed: 18 inches

Length: 23 inches

Total number of warp ends: 316

Threading: 1,2,3,4,1,2,3,4

Knots: Knots are inserted around every other pair of warp ends across the warp. Knots varied in weight. One square had knots with 4 ends in thinner 2 ply, the other square had knots with 3 ends, 2 thinner 2 ply and 1 thicker 2 ply.

Weave: 3/1 twill plus knots

Preparing the knots: Wind yam around a stick which has a groove in it. Cut along groove. Pieces are about 5 1/8 inches long.

Weaving:

1. Weave 3-4 inches 3/1 twill. With a direct tie-up, (counterbalance loom) 3 shafts must be lowered and I raised. The weft faced twill must be up as this is the surface where the knots must be made.
2. For the body of the rug, put in one row of knots, then weave 8 rows of weft, then the next row of knots. Be sure to pull the knots tightly so that they will not show on the warp faced side of the twill weave.
3. Weave 3-4 inches 3/1 twill.

EDITORS

Betty Johannesen
Donald Johannesen
51577 Bridgewater Ct.
South Bend, IN 46637
(219) 272-9806
e-mail: bettydon51@aol.co