

Scandinavian Study Group

of the Weavers Guild of Minnesota

Lila 19

ID or (initials) & # on back of piece

WEAVER'S NAME

Lila Nelson

DESCRIPTION (e.g. rug, pillow, sampler, or named piece)

hanging

FINISHED SIZE

H. 34" W. 13 ³/₄"

YARN INFORMATION (fiber, yarn size, color, brand, source)

Warp ~~cotton~~ ^{entire} same 12/6 blue, norwegian
 Weft wool, primarily prydnevgarn. Norwegian
 blues, greens, reds, gold

WEAVING INFORMATION:

sett reed size 12 sley (e.g. doubled or skipped) *every other dent*
 warp ends/inch 6 weft picks/inch *ca. 40*

finishing details (e.g. 4 strand braided, 1/2 inch hemmed)

ends turned back and covered with wide bias tape

Techniques used

5 harness danish brogd

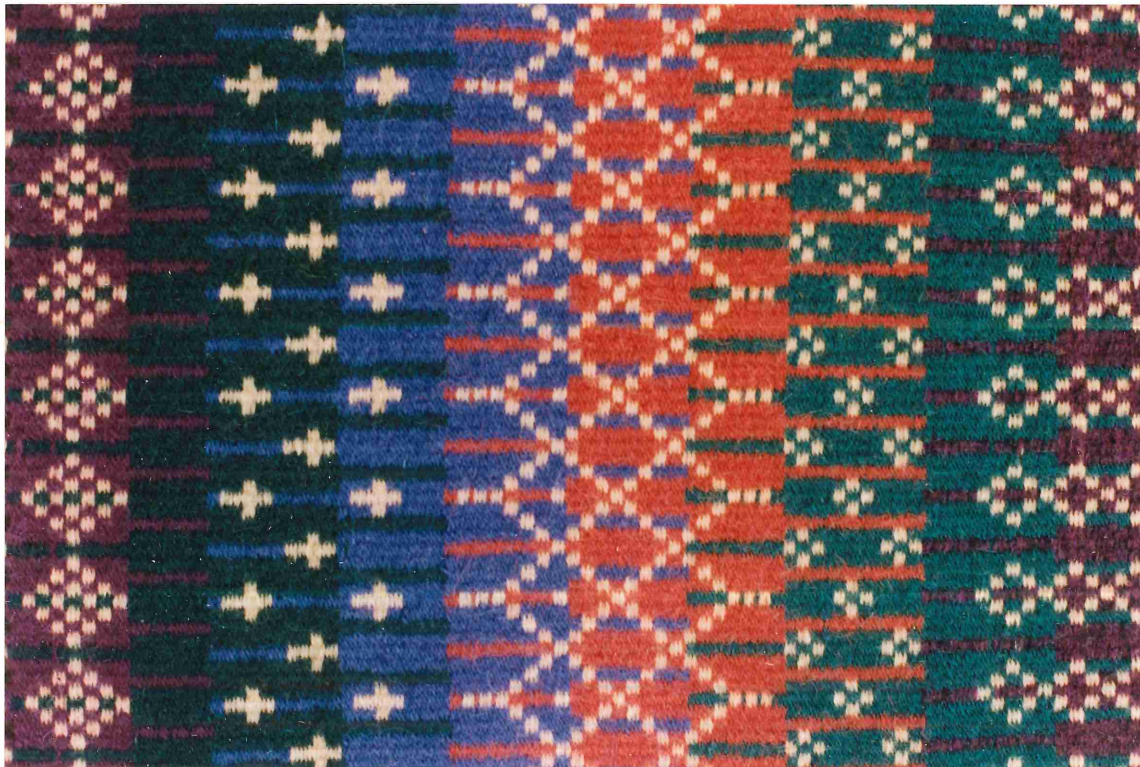
THREADING DRAFT

				5				5	
			4	4			4	4	
			3	3			3	3	
			2	2			2	2	
			1	1			1	1	

using shed

TIE-UP

X	O	O	X	O	O	X			
C	X	O	O	O	X	X			
O	X	O	O	O	O	X			
C	X	O	O	X	O	O			
X	O	X	O	O	O	X			
A	B	C	A	B	B	B			<i>tabic</i>
									<i>alternates</i>



Scandinavian Study Group

of the Weavers Guild of Minnesota

Lila 20

ID or (initials) & # on back of piece

WEAVER'S NAME

Lila Nelson

DESCRIPTION (e.g. rug, pillow, sampler, or named piece)

hanging

FINISHED SIZE

H. 29 1/2" W. 12"

YARN INFORMATION (fiber, yarn size, color, brand, source)

Warp linen, 3 ply natural, source unk.
 Weft wool, 3 ply tight twist, source unk.
 brown, orange, green, gold

WEAVING INFORMATION:

sett reed size 12 sley (e.g. doubled or skipped) every other dent

warp ends/inch 6 weft picks/inch ca. 3 1/2

finishing details (e.g. 4 strand braided, 1/2 inch hemmed)
 ends turned back and overcast

Techniques used

5 harness danskbroyd

THREADING DRAFT

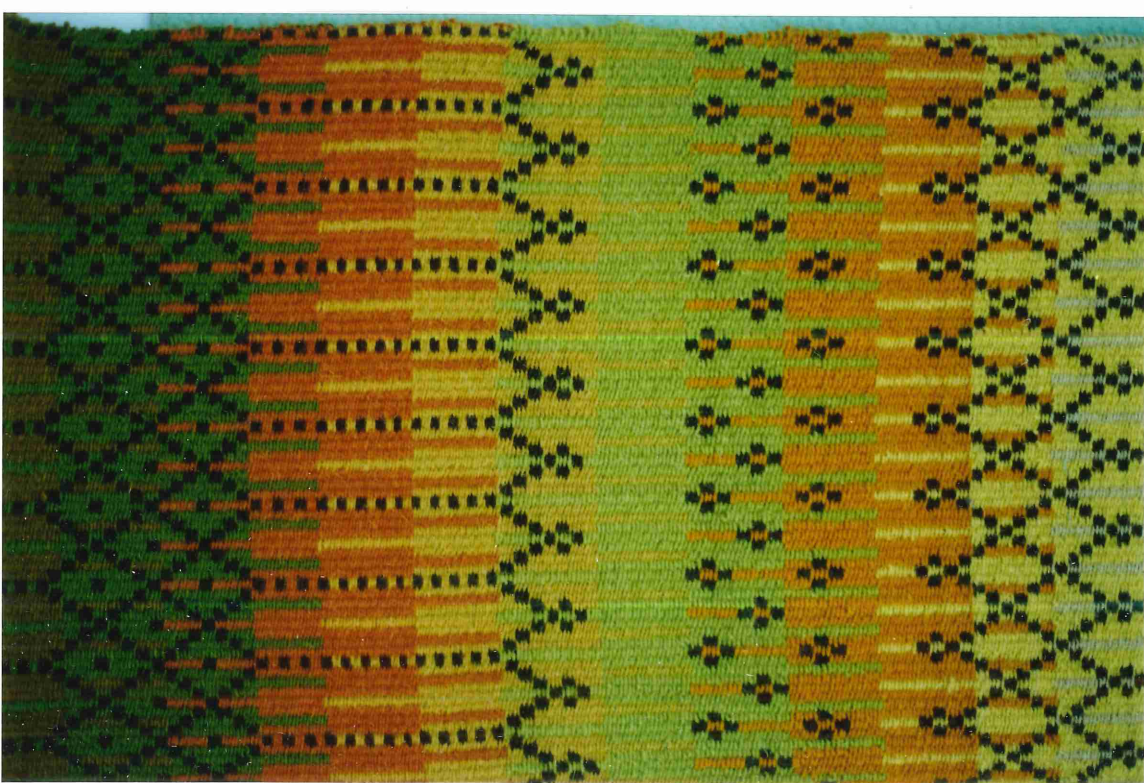
		5			5				
	4	4		4	4				
	3	3		3	3				
	2	2	2		2				
	1		1						1

rising sled

TIE-UP

X			X						X
K				X					
	X								X
X			X						
C	X								X
A	B	C	A	B	B				

btablin alternates



Scandinavian Study Group

of the Weavers Guild of Minnesota

Lila 21

ID or (initials) & # on back of piece

WEAVER'S NAME

Lila Nelson

DESCRIPTION (e.g. rug, pillow, sampler, or named piece)

sampler

FINISHED SIZE

H. 18" W. 29"

YARN INFORMATION (fiber, yarn size, color, brand, source)

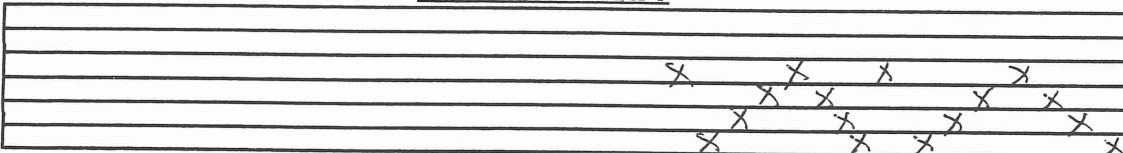
Warp linen . 3 ply
 Weft wool, pydvesgarn. Norwegian
 orange, brown, green, gray, gold

WEAVING INFORMATION:

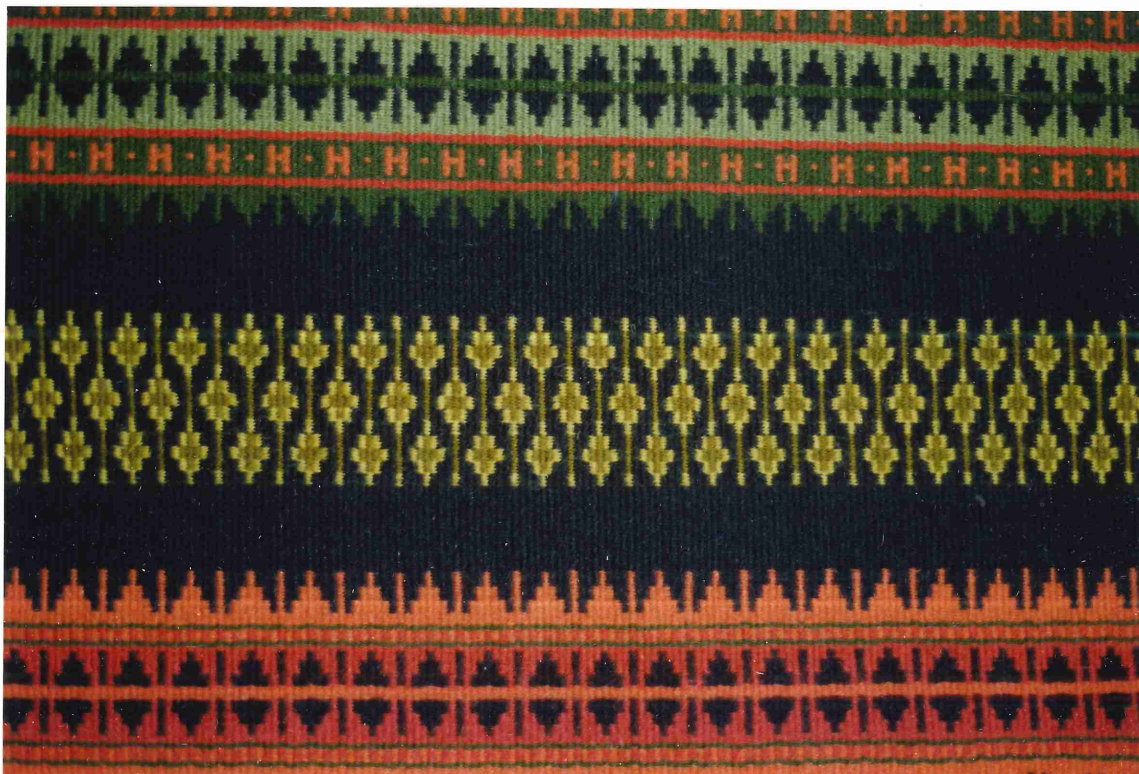
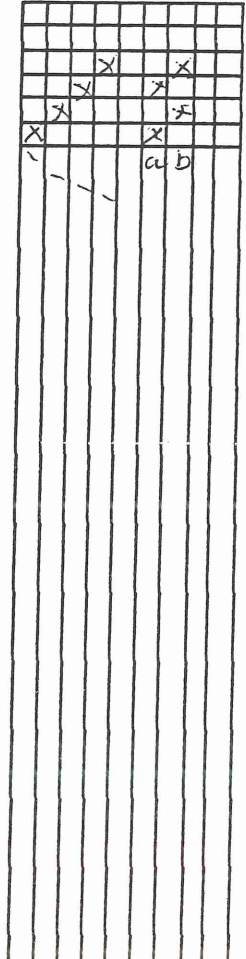
sett reed size 6-40 sley (e.g. doubled or skipped)
 warp ends/inch 6-40 weft picks/inch ca. 40
 finishing details (e.g. 4 strand braided, 1/2 inch hemmed)
 ends knotted and turned back. entire back lined
 Techniques used

a project in bound weave on rosepath done in 1978 at a workshop in Valdres, Norway, taught by Marit Anny Tveuge.

THREADING DRAFT



TIE-UP



Scandinavian Study Group

of the Weavers Guild of Minnesota

SS 6

ID or (initials) & # on back of piece

WEAVER'S NAME *Sally Scott*

DESCRIPTION (e.g. rug, pillow, sampler, or named piece) *Wall hanging* FINISHED SIZE

YARN INFORMATION (fiber, yarn size, color, brand, source)

Warp *silv twine*
Weft *Rauuma Spaellsaugarn, 2 tråds*

30" x 19.5"

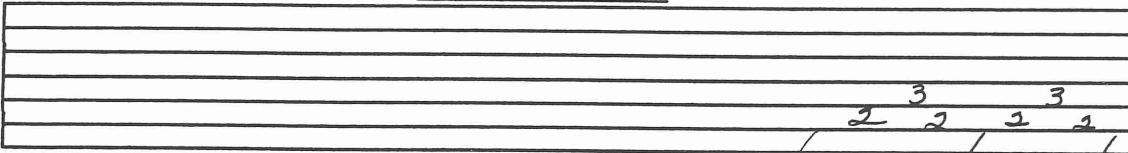
WEAVING INFORMATION:

sett reed size 6 sley (e.g. doubled or skipped) *1/dent*
warp ends/inch *6psi* weft picks/inch

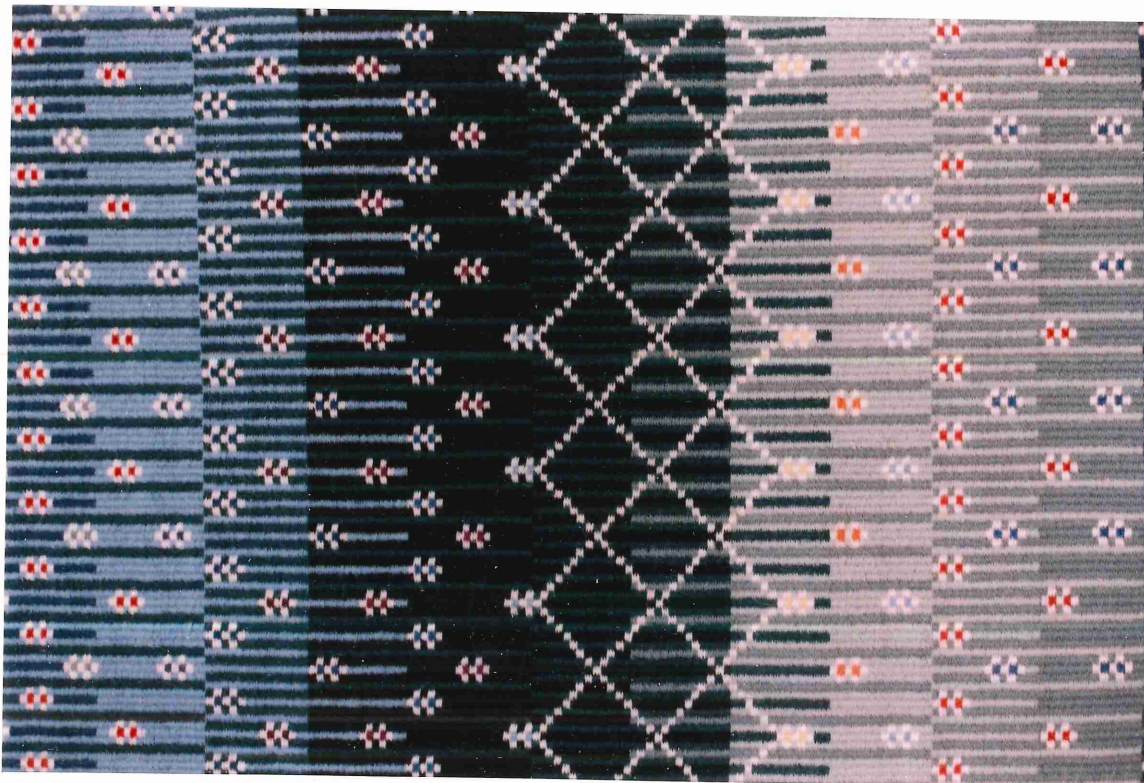
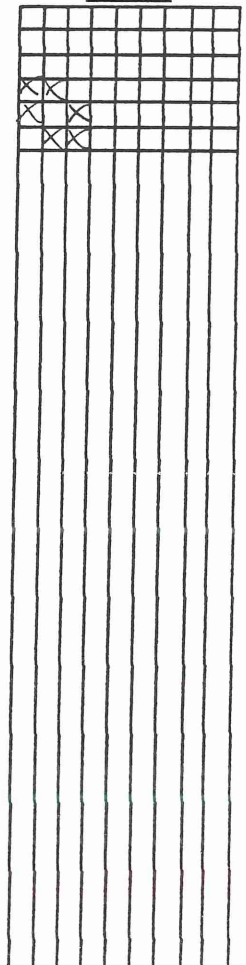
finishing details (e.g. 4 strand braided, 1/2 inch hemmed) *Turned back, under & hemmed with tape to protect ends.*

Techniques used *Danskbrødd
with floating selvage*

THREADING DRAFT



TIE-UP



Scandinavian Study Group

of the Weavers Guild of Minnesota

SS 2

ID or (initials) & # on back of piece

WEAVER'S NAME *Sally Scott*

DESCRIPTION (e.g. rug, pillow, sampler, or named piece) *3 pillows*

FINISHED SIZE *14" square*

YARN INFORMATION (fiber, yarn size, color, brand, source)

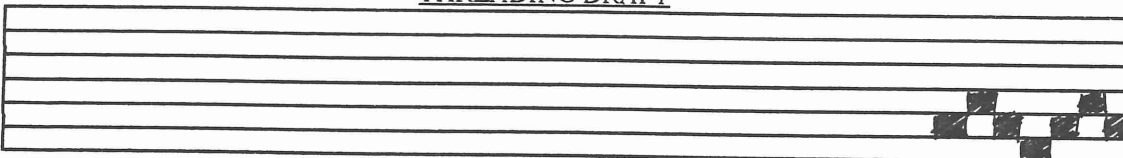
Warp *8/4 carpet cotton warp*
Weft *single ply Lamb's Pride*

WEAVING INFORMATION:

sett *6* reed size *6* sley (e.g. doubled or skipped) *doubled*
warp ends/inch *12 epi* weft picks/inch
finishing details (e.g. 4 strand braided, 1/2 inch hemmed) *overhand tie*

Techniques used *Traditional Krokbragd on 2 pillows
& Danskebragd on last pillow
used floating selvage*

THREADING DRAFT



TIE-UP

