

Krokbragd
(Norwegian Bound weave)
and Variations

Scandinavian Weaving Study Group

1996-1997

Table of Contents

Introduction by Lila Nelson

Group Project

Drafts with photos are assembled alphabetically
by weavers' last names:

Connie Anderson	CA
Ellen Berg Anderson	EBA
Judi Anderson	JHA
Janis Aune	JA
Jane Connett	JC
Ann Haushild	AH
Sharon Marquardt	SM
Caroline Miller	CM
Jan Mostrom	JM
Lila Nelson	LilaN
Marie Nodland	MN
Sally Scott	SS
Anna Smits	AS
Marjorie Wezeman	MW

Selected Bibliography compiled by Jan Mostrom

Coordination and Photography was done primarily by
Sally Scott and Ann Haushild.

We thank all members of the study group for their financial
contributions to help us prepare this notebook

Introduction by Lila Nelson

When we banded together as a group from the Minnesota Weavers Guild interested in studying traditional Scandinavian weaving, we decided to concentrate on one technique at a time. Our first year focused on two types of tapestry weaving used for coverlets, billedvev (pictorial tapestries) and aklaevvev (geometric interlocked tapestries), and culminated in an exhibition for the Minnesota Federation Meeting at Iron World in 1996.

Our second area of study, krokbragd (Norwegian bound weave) and its variations, has proven so broad and challenging that we have not only compiled our results into this notebook; we have also decided to continue our experiments for another six-month period.

Traditional Norwegian boundweave was a three-harness point twill structure woven with floats on the obverse side only, producing a thick warm bed cover popular throughout rural Norway. Single point or double point patterns were basic, with surprising variations obtained from color changes in a constant three-step treadling order. The Swedish bunden rosegang (bound weave on rosepath) gradually was added to the Norwegian bound weave repertoire.

In the southern Norwegian province of Vest-Agder, a bound weave variant called "danskbrogd" was first publicized in 1983 by curator Katherine Bringsdal after an exhibition of locally owned coverlets in the historical museum at Kristiansand. These were of two types: one a pick-up technique in a light color done on a krokbragd structure but in a solid dark color, and the other a series of geometric picked-up patterns on a plain weave ground.

The first example here is a traditional krokbragd based on a coverlet in the collection of Vesterheim, Norwegian-American Museum, and woven by members of the study group as a demonstration during the exhibition "Norwegian Folk Art: The Migration of a Tradition" at the Minnesota Museum of Art in 1997. From that traditional beginning, we have gone on to the following variations:

- Bound weave using non-traditional materials such as cotton strips.
- Double point krokbragd with single point borders.
- Bound weave on rosepath.
- Rosepath on opposites.
- Twill variations to produce figures.
- Danskbrogd with picked-up patterns on a ground of continuing krokbragd designs.
- Danskbrogd on rosepath and point twill.
- Danskbrogd on a five harness twill threading to minimize pick-ups
- Danskbrogd on a six harness twill threading to further minimize pick-ups.
- A straight four-harness twill threading on which three-harness krokbragd can be woven as well as danskbrogd and bound or plain weave.
- Danskbrogd on plain weave combined with discontinuous wefts for small pattern units.
- Tapestry with some elements of danskbrogd for surface variation.



Scandinavian Study Group

of the Weavers Guild of Minnesota

JC-1

ID or (initials) & # on back of piece

WEAVER'S NAME Jane Connett

DESCRIPTION (e.g. rug, pillow, sampler, or named piece)

Wall hanging - Krok bragd with Dansk bragd

FINISHED SIZE 11 3/4" x 24"

YARN INFORMATION (fiber, yarn size, color, brand, source)

Warp 12/6 fiskegarn
Weft 7/2

2 ply Rauma prydeogarn in many colors, from Syvilla Bolson in Decorah, Iowa

WEAVING INFORMATION:

sett 6 epi reed size 6 sley (e.g. doubled or skipped) single
warp ends/inch 6 epi x 12" w = 72 + 1 = 73 weft picks/inch ~ 75 per inch
finishing details (e.g. 4 strand braided, 1/2 inch hemmed)

Tie square knots and weave ends back into piece

Techniques used

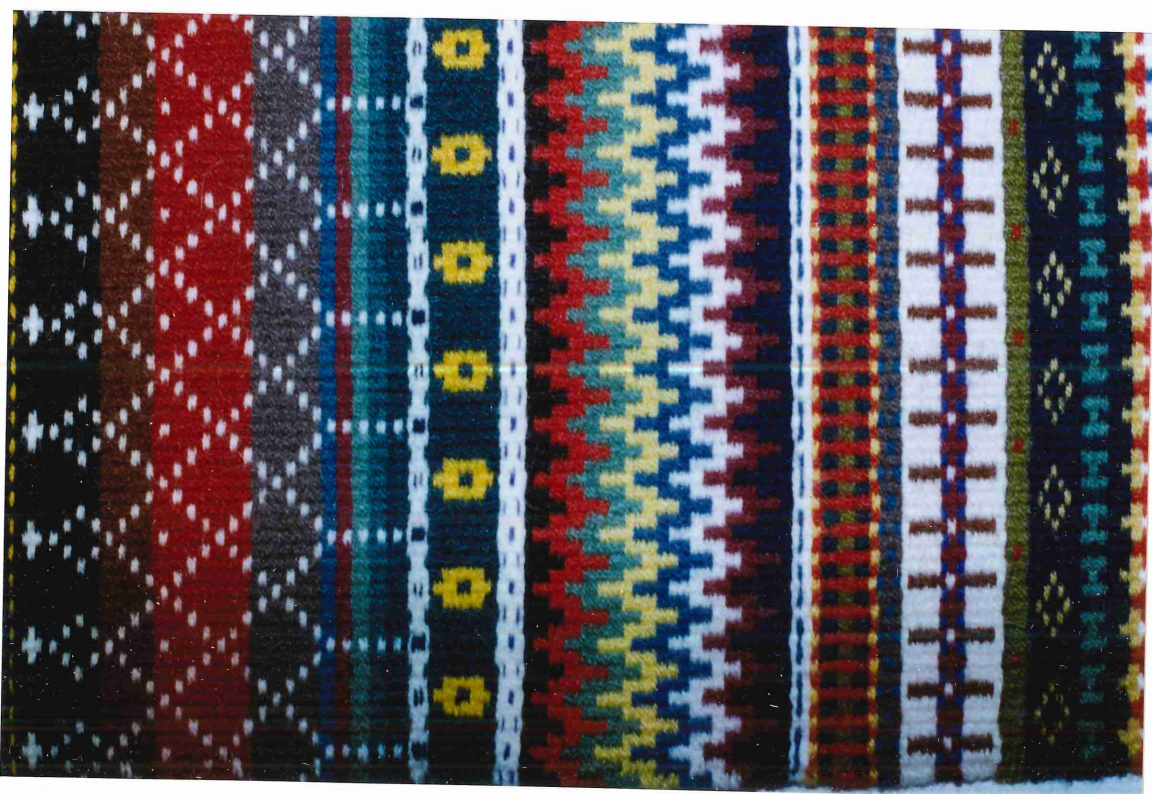
I designed the sampler as I weave, using Dansk bragd pickup.
I wanted to use a lot of colors as a challenge

THREADING DRAFT

			3			3		
			2	2		2	2	
			end →					

TIE-UP

	0	0															
	0	0															
		0	0														
		1	2	3													
		/	/	/													
		/	/	/													
		/	/	/													
		/	/	/													



Scandinavian Study Group

of the Weavers Guild of Minnesota

CM 1

ID or (initials) & # on back of piece

WEAVER'S NAME

CAROLINE MILLER

DESCRIPTION (e.g. rug, pillow, sampler, or named piece)

BLUE BERRY WOODS - LATE AUGUST

FINISHED SIZE

17 x 22 1/2

YARN INFORMATION (fiber, yarn size, color, brand, source)

Warp LINEN RUC WARP

Weft WORSTED - MAYDOLE NEHALEM - 3 PLY
 DARK TEAL OLIVE
 MEDIUM BLUE GREEN GREEN YELLOW DARK RED

WEAVING INFORMATION:

sett reed size 10 sley (e.g. doubled or skipped)
 warp ends/inch 8 weft picks/inch 160
 finishing details (e.g. 4 strand braided, 1/2 inch hemmed)

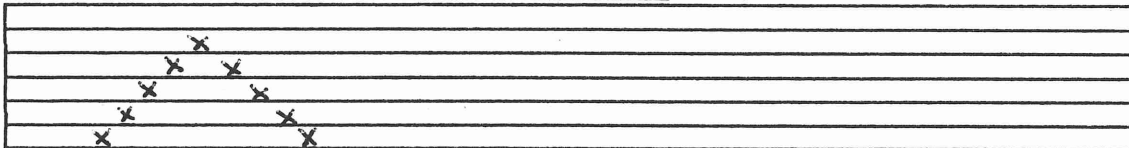
SWEDISH BRAID

Techniques used

DANSK BROGD

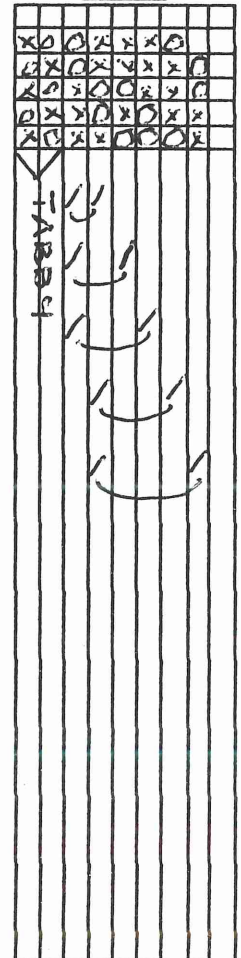
THREADING DRAFT

FRONTAL SELVEGE



COUNTER MARKS

TIE-UP



Scandinavian Study Group

of the Weavers Guild of Minnesota

JM-1

ID or (initials) & # on back of piece

WEAVER'S NAME

Jan Mostrom

DESCRIPTION (e.g. rug, pillow, sampler, or named piece)

Dansk brogd Flower Garden

FINISHED SIZE

10" x 36"

YARN INFORMATION (fiber, yarn size, color, brand, source)

Warp 10/3 linen

Weft Rauma Prydvevgarn

WEAVING INFORMATION:

sett 8 reed size 8 sley (e.g. doubled or skipped) single

warp ends/inch 8 weft picks/inch

finishing details (e.g. 4 strand braided, 1/2 inch hemmed)

Techniques used

The 6 harness threading allowed this dansk brogd design to be done without using pickup. The draft was originally developed by Mary Temple. The design is original. The border idea came from a weaving in the Vesterheim collection.

THREADING DRAFT

	6		6		6	
	5	5	5	5	5	5
	4		4		4	
	3		3		3	
	2	2	2	2	2	2

← 1x → ← 5x → → 1x →

TIE-UP

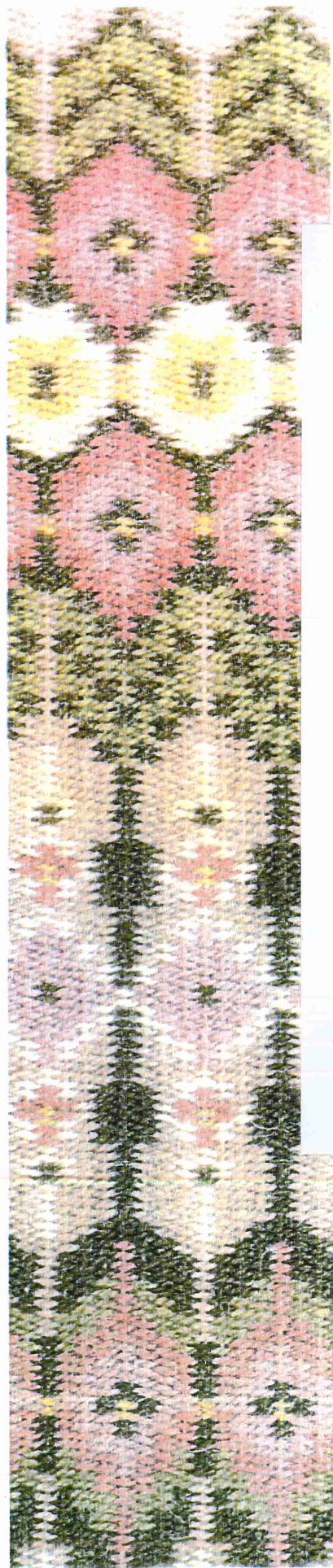
X	X	X	X	X	X	X	X	X	X
X	X	X	X	X	X	X	X	X	X
X	X	X	X	X	X	X	X	X	X
X	X	X	X	X	X	X	X	X	X
X	X	X	X	X	X	X	X	X	X
X	X	X	X	X	X	X	X	X	X
X	X	X	X	X	X	X	X	X	X
X	X	X	X	X	X	X	X	X	X

tabb.

Krok-brag

Dansk brogd design





Scandinavian Study Group

of the Weavers Guild of Minnesota

J M 2

ID or (initials) & # on back of piece

WEAVER'S NAME

Jan Mostrom

DESCRIPTION (e.g. rug, pillow, sampler, or named piece)

Forest Echoes Wall hanging

FINISHED SIZE

26.5" x 52"

YARN INFORMATION (fiber, yarn size, color, brand, source)

Warp 10/5 linen. 171 ends including doubled selvages
 West Rauma Prydrevgarn 689 608 664 693 640
 Kunstvevgar 69 118

WEAVING INFORMATION:

sett 6 reed size 12 sley (e.g. doubled or skipped) every other dent
 warp ends/inch 6 weft picks/inch ~68
 finishing details (e.g. 4 strand braided, 1/2 inch hemmed)
 knotted edge

Techniques used

Bound rosepath and danstkragd

All pick up areas were done on 4. Some picked up areas were covered with the background color to eliminate some design elements. Other areas were picked up to change the color of some design areas.

THREADING DRAFT

1	1	1	1	1	1	1	1	1	1	1	1	1	1	1	1	1	1	1	1	1	1	1	1	1
2	2	2	2	2	2	2	2	2	2	2	2	2	2	2	2	2	2	2	2	2	2	2	2	2
3	3	3	3	3	3	3	3	3	3	3	3	3	3	3	3	3	3	3	3	3	3	3	3	3
4	4	4	4	4	4	4	4	4	4	4	4	4	4	4	4	4	4	4	4	4	4	4	4	4

TIE-UP

	X	X	X					
X	X	X						
X	X	X						
X	X	X						





Scandinavian Study Group

of the Weavers Guild of Minnesota

Lila 3

ID or (initials) & # on back of piece

WEAVER'S NAME

Lila Nelson

DESCRIPTION (e.g. rug, pillow, sampler, or named piece)

Cityscape

FINISHED SIZE

H. 7 1/2" W. 9"

YARN INFORMATION (fiber, yarn size, color, brand, source)

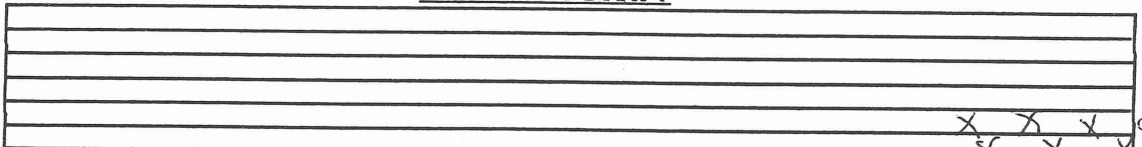
Warp cotton seine 12/2 natural Norwegian
Weft wool, ferdvevger, multi-colors, Norwegian

WEAVING INFORMATION:

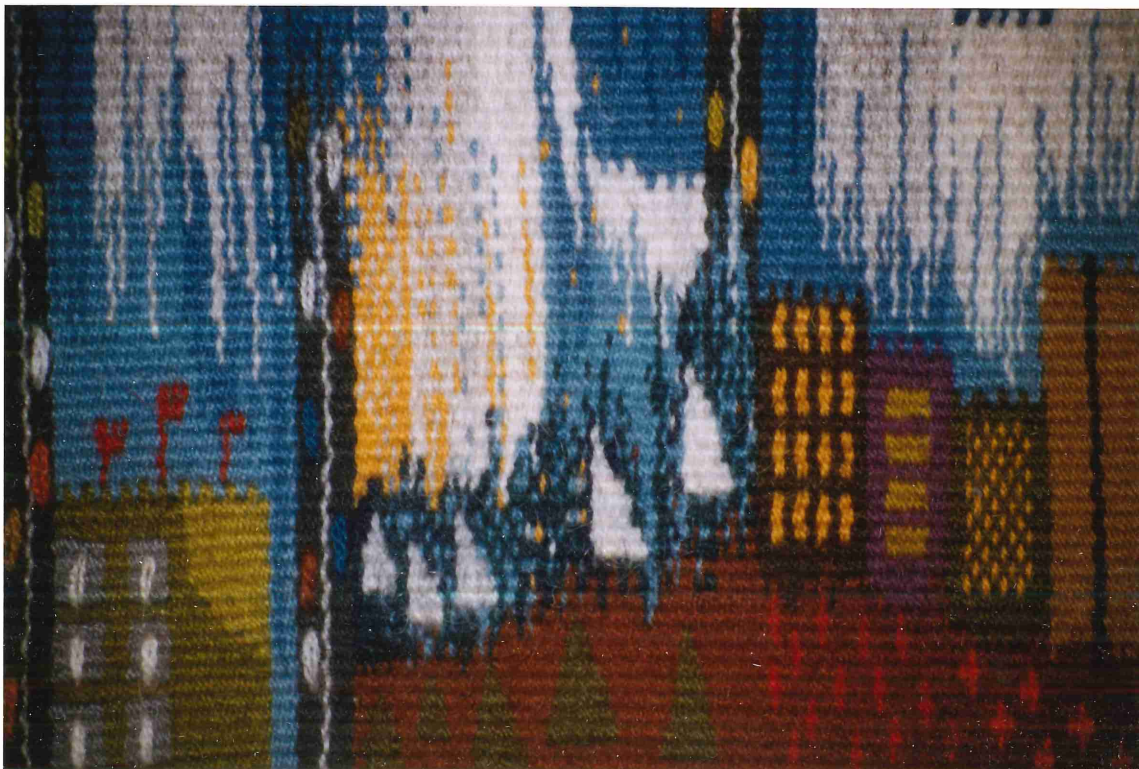
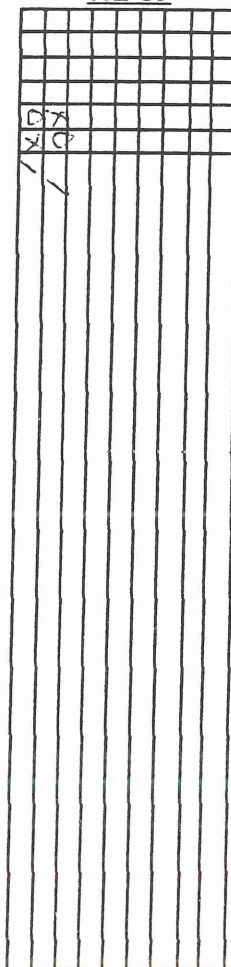
sett reed size 8 sley (e.g. doubled or skipped) 1 per dent 1 per heddle
warp ends/inch 8 weft picks/inch ca. 40
finishing details (e.g. 4 strand braided, 1/2 inch hemmed)
ends turned back and covered with wide bias tape

Techniques used
filled with dovetailing and hatching
Vestfold tekisikk
2 harness double brood

THREADING DRAFT



TIE-UP



Scandinavian Study Group

of the Weavers Guild of Minnesota

File 5

ID or (initials) & # on back of piece

WEAVER'S NAME

Lila Nelson

DESCRIPTION (e.g. rug, pillow, sampler, or named piece)

hanging

FINISHED SIZE

H. 17 3/4" (+ fringe)
W. 13"

YARN INFORMATION (fiber, yarn size, color, brand, source)

Warp 4 ply linen, natural, source unk
Weft wool, abbeign and pydros yarn, yellow and blues, Norwegian

WEAVING INFORMATION:

sett reed size 12 sley (e.g. doubled or skipped) every other dent

warp ends/inch 6 weft picks/inch ca. 20

finishing details (e.g. 4 strand braided, 1/2 inch hemmed) top turned back and overcast
lower fringed finished in half knot, then twisted in groups of four

Techniques used
6 harness dansk brogd with picks as needed.
(would be more efficient on 2 harness dansk brogd with shorter floats on back)

tie up X's for rising shed

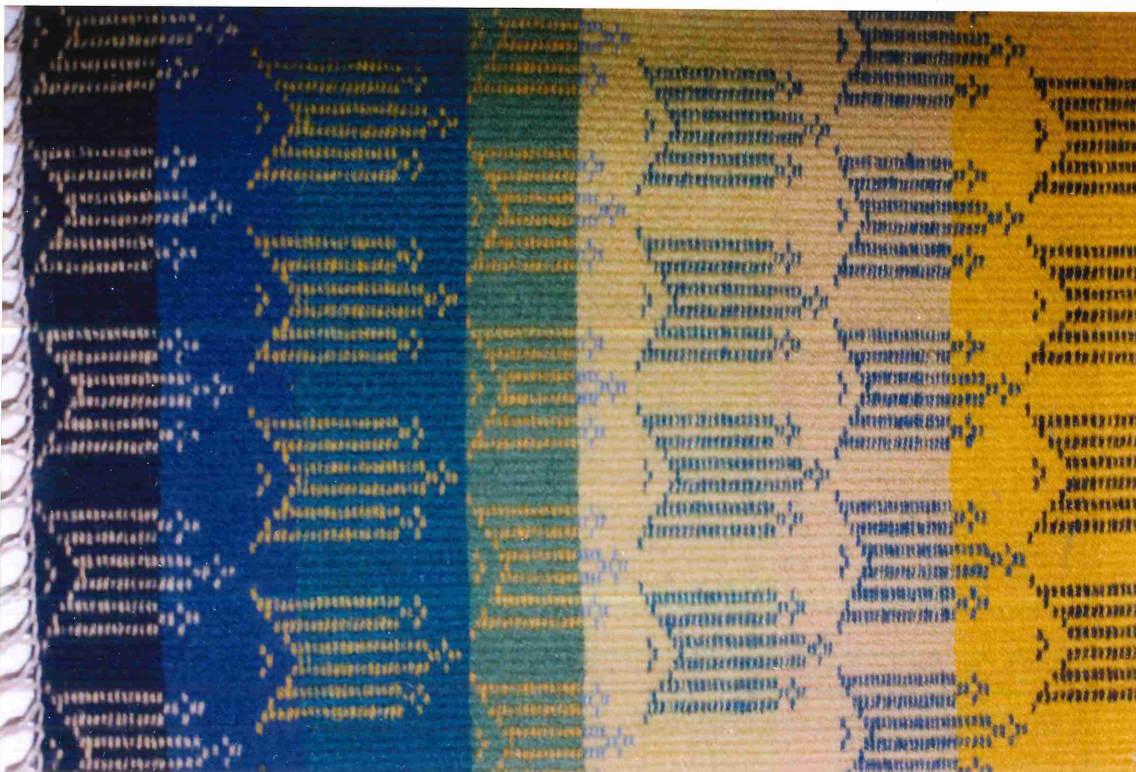
THREADING DRAFT

	6	6	
	5 5	5 5	
	4	4	
		3	3
	2 2	2 2	

TIE-UP

O	A	C		
X	O	A		C
X	A	O		C
X	O	X		C
X	O	X	O	
C	X	O		
A	B	C		

alternates



Scandinavian Study Group

of the Weavers Guild of Minnesota

Lila 6

ID or (initials) & # on back of piece

WEAVER'S NAME

Lila Nelson

DESCRIPTION (e.g. rug, pillow, sampler, or named piece)

Cityscape

FINISHED SIZE

H. 8" W. 16"

YARN INFORMATION (fiber, yarn size, color, brand, source)

Warp cotton seams, 12/2 natural. Norwegian
 Weft wool. prydues garn. multi-colors - Norwegian

WEAVING INFORMATION:

sett reed size 8 sley (e.g. doubled or skipped) 1 per dent, 1 per heddle
 warp ends/inch 8 weft picks/inch ca. 40

finishing details (e.g. 4 strand braided, 1/2 inch hemmed)

ends turned back and covered with bias tape

Techniques used

billedweave with dove tailing and hutching
 heart fold technique
 2 harness danish brocade

THREADING DRAFT

TIE-UP



Scandinavian Study Group

of the Weavers Guild of Minnesota

Dila 7

ID or (initials) & # on back of piece

WEAVER'S NAME

Dila Nelson

DESCRIPTION (e.g. rug, pillow, sampler, or named piece)

Cityscape

FINISHED SIZE

H. $19\frac{1}{2}"$ W. $18\frac{1}{4}"$

YARN INFORMATION (fiber, yarn size, color, brand, source)

Warp cotton ~~seam~~ 10/6 natural - Norwegian
Weft wool ~~pydsevagnen~~ - Norwegian multi-colored

WEAVING INFORMATION:

sett reed size 8 sley (e.g. doubled or skipped) 1 per dent, 1 per heddle
warp ends/inch 8 weft picks/inch ca. 40

finishing details (e.g. 4 strand braided, 1/2 inch hemmed)
ends turned back and covered with wide bias tape

Techniques used

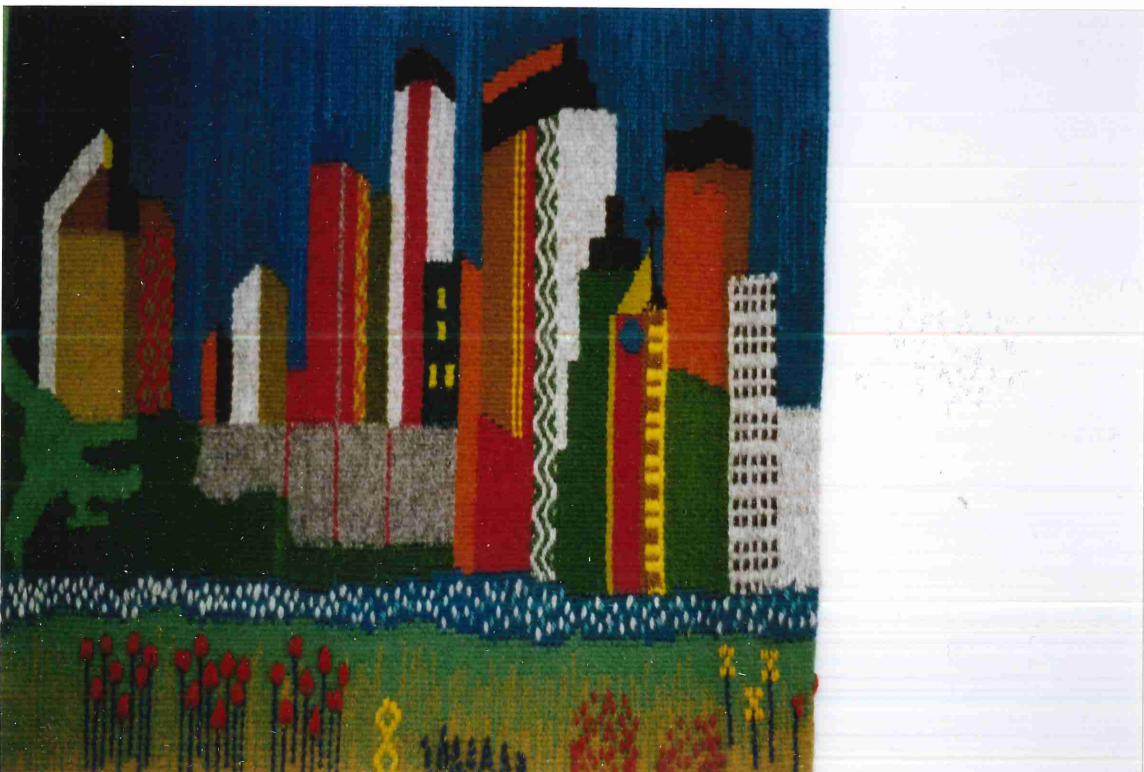
tapestry - slit, dove tailing, hatching
vestal teknik
dansk brygd
weft on opposites
(warp should be thicker or more closely spaced)
rising shed

THREADING DRAFT

	4	4	4	4	
		3	3	3	3
		2	2	2	2

TIE-UP

X	X	X	X	X			
X	X	X	X	X			
X	X	X	X	X			
X	X	X	X	X			



Scandinavian Study Group

of the Weavers Guild of Minnesota

Lila S

ID or (initials) & # on back of piece

WEAVER'S NAME

Lila Nelson

DESCRIPTION (e.g. rug, pillow, sampler, or named piece)

sampler

FINISHED SIZE

H. 12" W. 11 3/4"

YARN INFORMATION (fiber, yarn size, color, brand, source)

Warp cotton seine 1 2/6 natural Norwegian
 Weft wool pyrl nevgarn Norwegian
 blue, gold, green

WEAVING INFORMATION:

sett reed size 8 sley (e.g. doubled or skipped) 1 per dent; 1 per heddle
 warp ends/inch 8 weft picks/inch ca. 40

finishing details (e.g. 4 strand braided, 1/2 inch hemmed)

ends turned back and overcast

Techniques used

danskbroed on 5 harness point twill -
 some tabby pickup and two-color variations

THREADING DRAFT

			5			5			
		4	4			4	4		
		3		3		3		3	
		2		2		2		2	
		1		1		1		1	

rising shed

TIE-UP

X	C	C	C	X	D	D	X
C	X	C	C	C	X	X	C
C	C	X	C	C	C	D	X
C	X	C	C	C	X	D	C
X	C	C	X	C	C	D	X
A	B	C	A	B	B	B	B

tail alternates



Scandinavian Study Group

of the Weavers Guild of Minnesota

Lila 9

ID or (initials) & # on back of piece

WEAVER'S NAME

Lila Nelson

DESCRIPTION (e.g. rug, pillow, sampler, or named piece)

table mat

FINISHED SIZE

L. 19" + fringe
W. 12

YARN INFORMATION (fiber, yarn size, color, brand, source)

Warp cotton carpet warp, black, and
Weft cotton and synthetic cotton some 12/6 blue
cloth stripes, blue and gray, ca 1/3" wide
alternated

WEAVING INFORMATION:

sett reed size 12 sley (e.g. doubled or skipped) / warp every other dent
warp ends/inch 6 weft picks/inch ca. 16

finishing details (e.g. 4 strand braided, 1/2 inch hemmed)

warp tied in half knots and then twisted in groups of 8

Techniques used

5 harness dash brog. requires extra wefts at borders to maintain block borders along each side

THREADING DRAFT

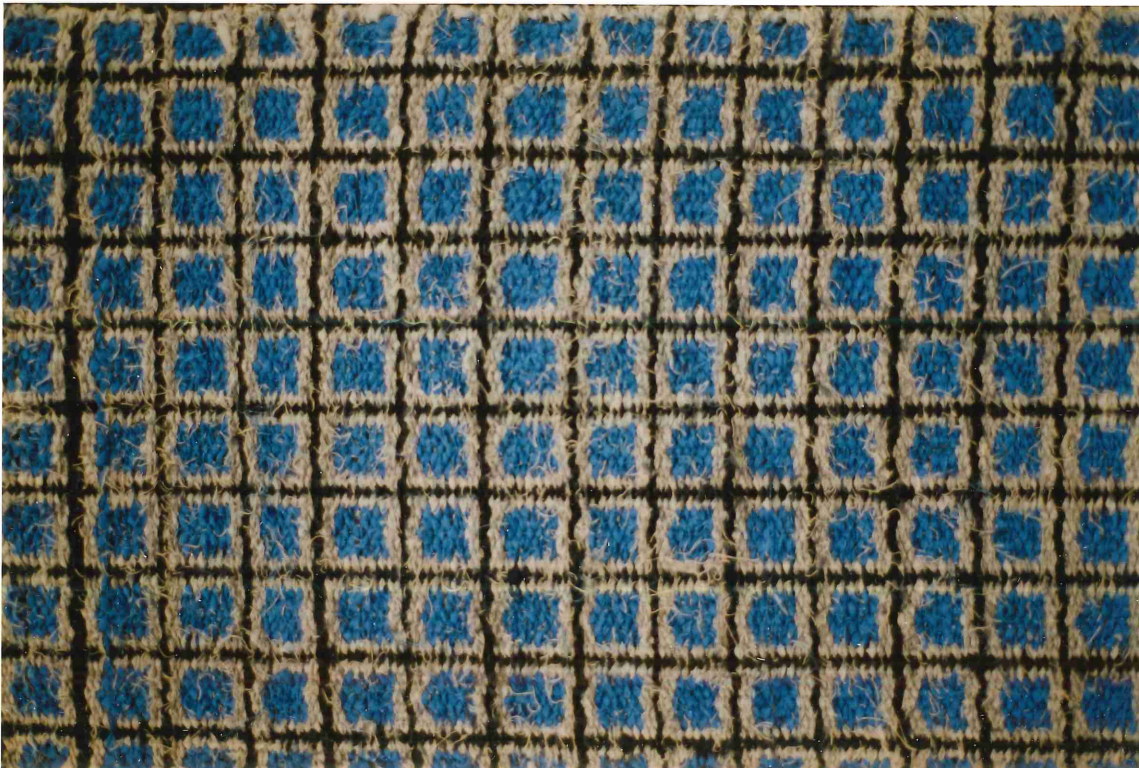
			5		5				
		4	4		4	4			
		3	3		3	3			
		2	2	2	2				

rising shed

TIE-UP

X	C	C	C	X	C	C	X		X
C	X	C	C	C	C	C	X		C
C	C	X	C	C	C	C	C		X
C	C	C	C	X	C	C	C		C
X	C	C	C	C	C	C	C		X

alternating



Scandinavian Study Group

of the Weavers Guild of Minnesota

Lila 11

ID or (initials) & # on back of piece

WEAVER'S NAME

Lila Nelson

DESCRIPTION (e.g. rug, pillow, sampler, or named piece)

rug

FINISHED SIZE

L. 52" + fringe

YARN INFORMATION (fiber, yarn size, color, brand, source)

Warp cotton carpet warp, 2 shades blue
 Weft wool primarily akle yarn and
 prydbergarn. Norwegian. reds, blues, greens

WEAVING INFORMATION:

sett reed size 10 sley (e.g. doubled or skipped) doubled every other dent
 warp ends/inch 5 doubled weft picks/inch ca. 16
 finishing details (e.g. 4 strand braided, 1/2 inch hemmed)
 edged with half knots and then twisted in groups of 16

Techniques used

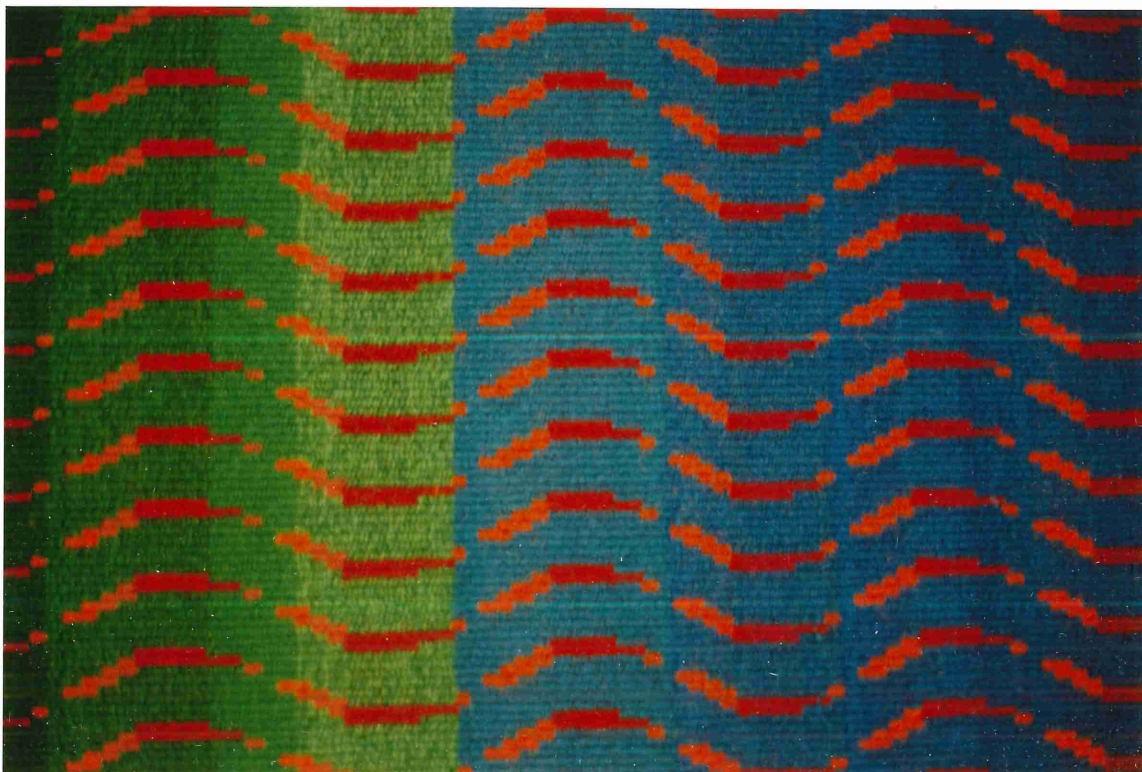
2 harness double brocade

THREADING DRAFT

2 2 2
1 1 1

TIE-UP

OX																				
XZ																				
picked as required																				



Scandinavian Study Group

of the Weavers Guild of Minnesota

Lila 14

ID or (initials) & # on back of piece

WEAVER'S NAME

Lila Nelson

DESCRIPTION (e.g. rug, pillow, sampler, or named piece)

Winter Sky

FINISHED SIZE

H. 18" W. 13"

YARN INFORMATION (fiber, yarn size, color, brand, source)

Warp cotton carpet warp, red and blue, Mayville
Weft wool Harrisville, norwegian purluvengarn, reds, blues and golds

WEAVING INFORMATION:

sett reed size 10 sley (e.g. doubled or skipped) doubled every other dent
warp ends/inch 5 doubled weft picks/inch ca. 20

finishing details (e.g. 4 strand braided, 1/2 inch hemmed)
turned back and over cast

Techniques used
buildings were done on a harness danch brood with colors carried on back as needed. the ground was continued on standard 2 harness danch brood with diamond forms laid in as discontinuous we

2 2 2



TIE-UP

04										
40										
1										

pick up as described

Scandinavian Study Group

of the Weavers Guild of Minnesota

Lila 15

ID or (initials) & # on back of piece

WEAVER'S NAME

Lila Nelson

DESCRIPTION (e.g. rug, pillow, sampler, or named piece)

Turtles

FINISHED SIZE

17.24 1/2" W. 14"

YARN INFORMATION (fiber, yarn size, color, brand, source)

Warp cotton seine 1/6 blue norwegian
 Weft wool pryduer yarn. red, green, blue. norwegian

WEAVING INFORMATION:

sett reed size 12 sley (e.g. doubled or skipped) skip every other dent
 warp ends/inch 6 weft picks/inch ca. 40

finishing details (e.g. 4 strand braided, 1/2 inch hemmed)
 ends turned back and overcast

Techniques used

5 harness dance brogd. In areas where the pattern did not extend to the sides, extra ground color wefts were added as necessary to cover warps adequately.

THREADING DRAFT

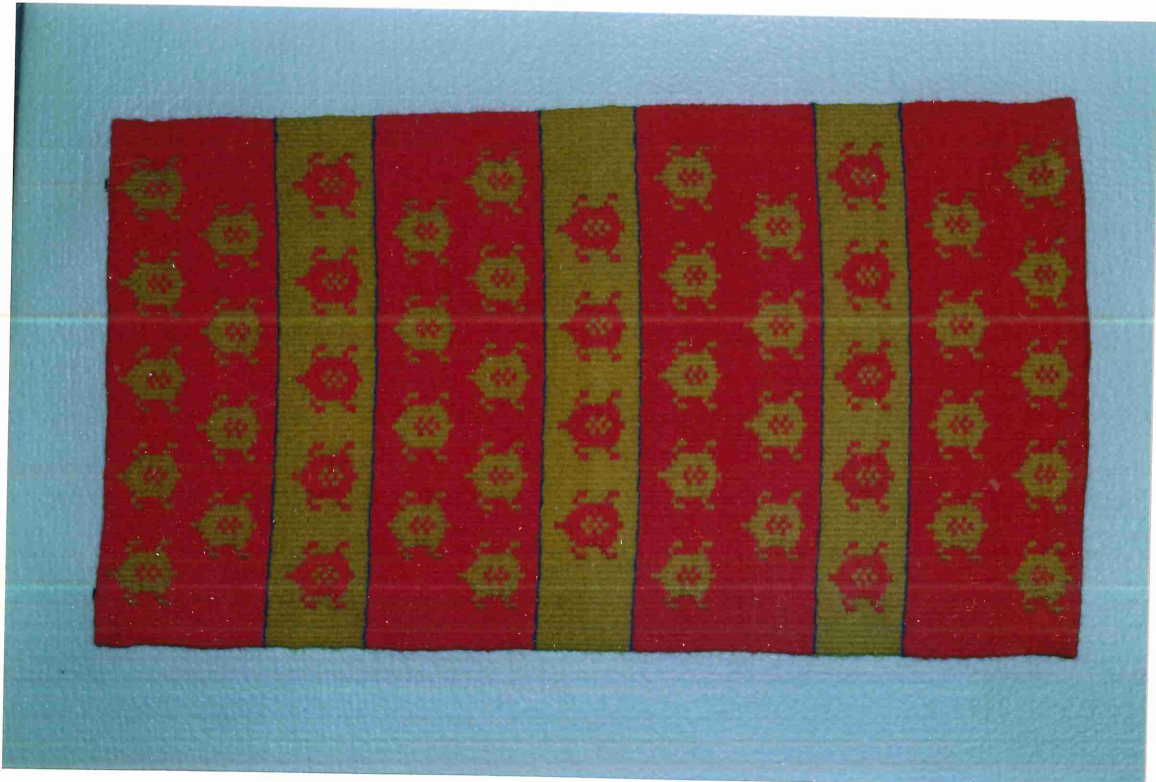
			5			5	
		4	4		4	4	
		3	3		3	3	
		2	2	2		2	

rising shed

TIE-UP

X	D	D	X	D	D	X	X
D	X	D	D	C	D	X	D
C	C	X	C	D	D	D	X
D	X	C	D	D	X	D	C
X	C	C	X	D	C	D	X
A	B	C	A	B	C	B	A

alternates



Scandinavian Study Group

of the Weavers Guild of Minnesota

Lila 16

ID or (initials) & # on back of piece

WEAVER'S NAME

Lila Nelson

DESCRIPTION (e.g. rug, pillow, sampler, or named piece)

Night Sky

FINISHED SIZE

H. 23" W. 13 1/2"

YARN INFORMATION (fiber, yarn size, color, brand, source)

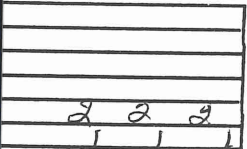
Warp cotton carpet warp, red and blue, Mayville
 Weft primarily wool prygaeogarn, red, blue and gold. Norwegian metallic paint.

WEAVING INFORMATION:

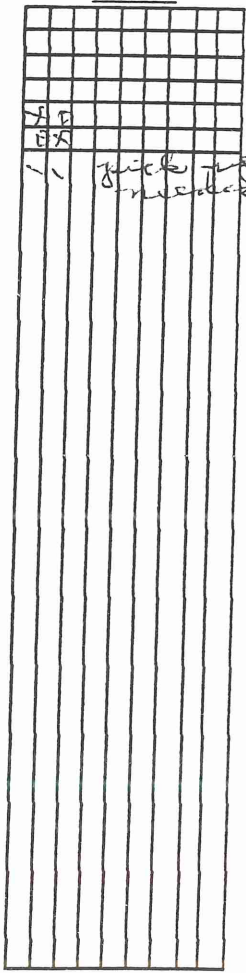
sett reed size 10 sley (e.g. doubled or skipped) doubled every other dent
 warp ends/inch 5 doubled weft picks/inch ca. 40
 finishing details (e.g. 4 strand braided, 1/2 inch, hemmed)
 turned under and overcast

Techniques used

buildings were done in interlock tapestry. done -
 remainder of ground was in 2 harness done -
 broad with diamonds in discontinuous w-ft



TIE-UP



Scandinavian Study Group

of the Weavers Guild of Minnesota

Lila 18

ID or (initials) & # on back of piece

WEAVER'S NAME

Lila Nelson

DESCRIPTION (e.g. rug, pillow, sampler, or named piece)

runner

FINISHED SIZE

L. 34" + fringe

YARN INFORMATION (fiber, yarn size, color, brand, source)

Warp linen, heavy 4 ply. source unk?
 Weft wool, tight twisted 3 ply. source unk?
 reds and greens

WEAVING INFORMATION:

sett reed size 8 sley (e.g. doubled or skipped) every other dent
 warp ends/inch 4 weft picks/inch ca 12

finishing details (e.g. 4 strand braided, 1/2 inch hemmed)
 over and knot every 2 warps, then 4 were twisted together.

Techniques used
 5 harness dansbroad

(Photo is a close-up)

THREADING DRAFT

			5		3				
		4	4		4	4			
		3	3	3	3				
		2	2	2	2				
	1			1					1

rising shed

TIE-UP

X	0	0	0	X	0	0	X		
0	X	0	0	0	X	0			
0	0	X	0	0	0		X		
0	X	0	0	X	0				
X	0	0	X	0	0				
A	B	C	A	B	B	B	B	B	B

alternates

