

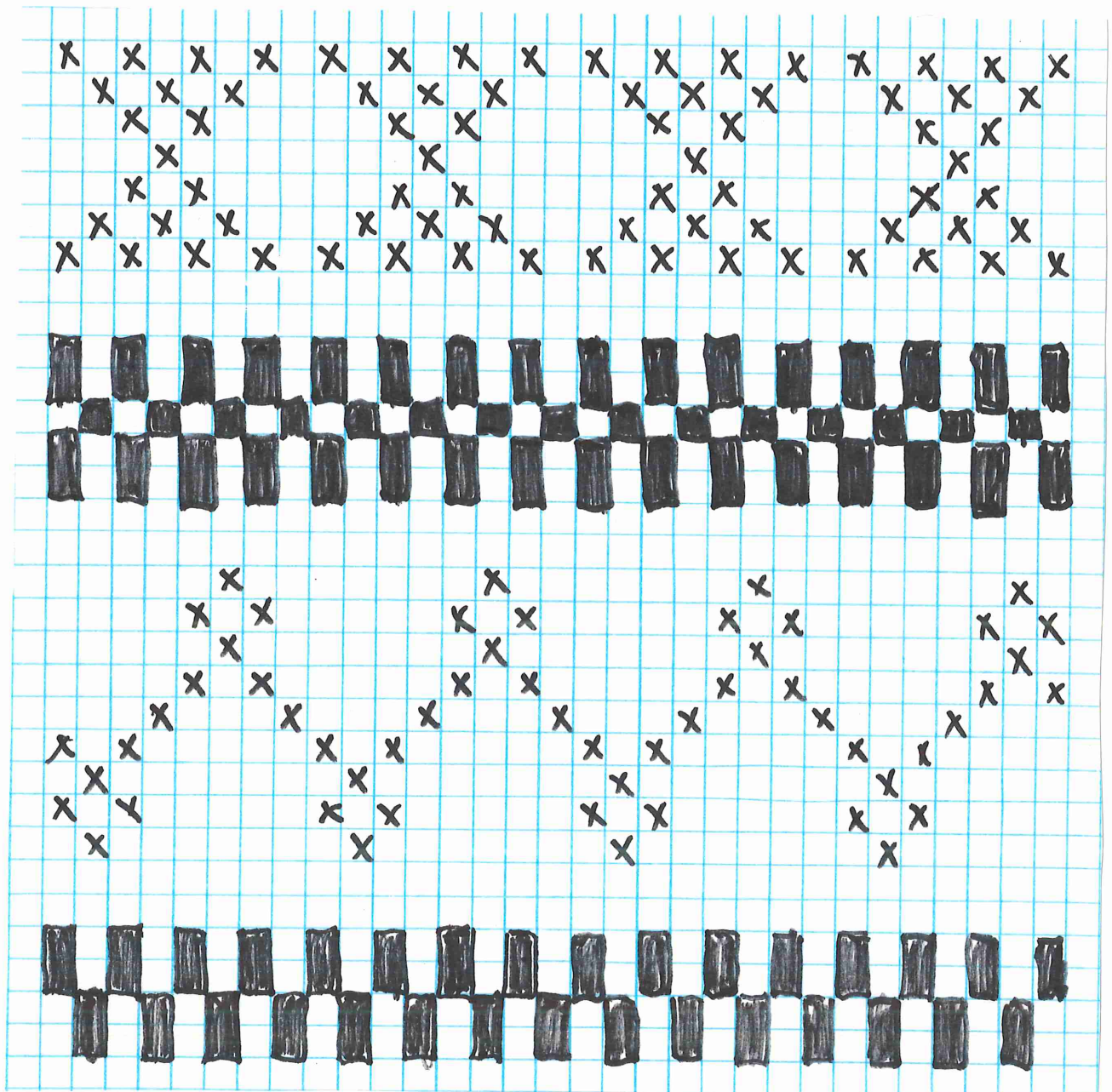
Danskbragd on 2 shafts

REMEMBER

1. When pick up is done, you MUST cover all warps of a shed before moving to the next shed. First pick up the non-pattern warps, throw a pick of your pattern weft to cover the warps not picked up. Next you must pick up the warps you just covered and throw a background weft shot. Now all of the warps for that shed are covered and you may treadle the next shed.
2. Design "spots" should not touch, but be separated. This may require you to weave both tabby shots of background before picking up the next "spot". On krokbragd, you may need to put a complete repeat of sheds 1 2 3 in background weft between "spots". These extra background shots are not always needed so the weaver must remain watchful.

"Norwegian Danskbragd" Lila Nelson Handwoven September/ October 1996

"Danskbragd Rug" Betty Johannesen Weavers Issue 25



Krokbragd and Danskbragd

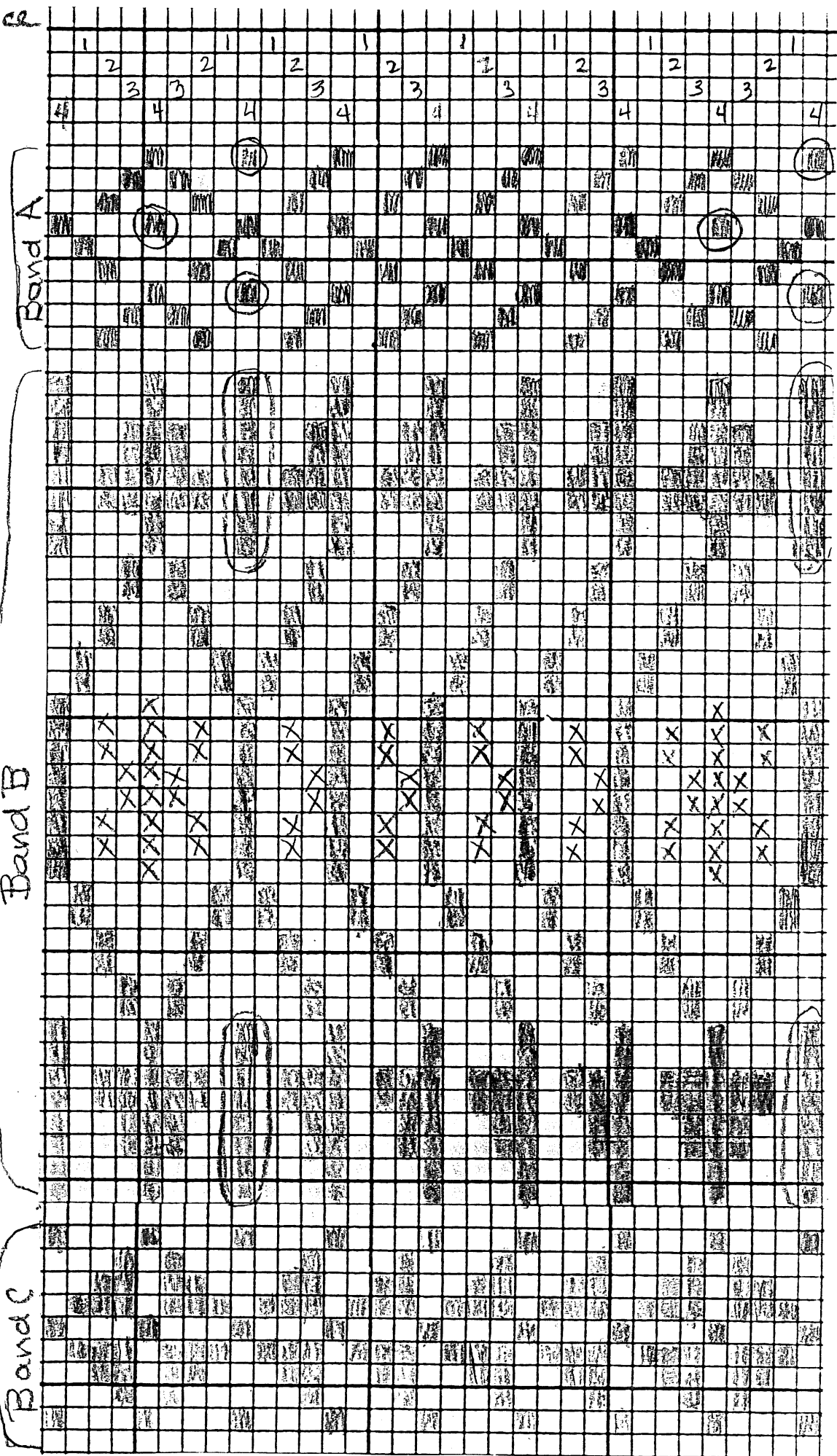
Krokbragd is woven by ALWAYS treading sheds 1 2 3 in order over and over. The color placement is what determines the pattern. Each square in the pattern is obtained by repeating the same color sequence in sheds 1 2 3 until the design squares up. Then you have a complete pattern square from the graph paper chart woven. Danskbragd "spots" require repetition of the same pick up and color sequence (still covering sheds 1 2 3 in order) until the "spots" square up.

The chart consists of several parts on a light blue grid background:

- Header Row:** A horizontal row of 16 squares. The top row of this header has 'x' marks in the 2nd, 4th, 6th, 8th, 10th, 12th, 14th, and 16th positions. The bottom row of this header has 'x' marks in the 1st, 3rd, 5th, 7th, 9th, 11th, 13th, 15th, and 17th positions.
- Main Grid:** A 16x16 grid of squares. The squares are filled with either black or white, creating a complex woven pattern. The pattern repeats every 4 squares horizontally and vertically.
- Letter Column:** A vertical column of 30 letters on the right side of the grid, corresponding to the rows of the main grid. The letters are: b, b, D, b, b, D, M, b, b, D, M, L, D, M, L, M, L, L, M, L, L, D, M, L, D, M, L, b, D, M, b, b, D, b, b, D.
- Bottom Grid:** A large grid of 'x' marks at the bottom of the page, forming a decorative, repeating pattern that mirrors the woven pattern above.

Weaving Sequence

- 1" background
- Band A
- 1/2" background stripes
- 1/4" background
- Band C
- 1/4" background stripes
- 1/2" background
- Band B
- 1/2" background stripes
- 1/4" background
- Band C
- 1/4" background stripes
- 1/2" background
- Band B
- 1/2" background stripes
- 1/4" background
- Band C
- 1/4" background stripes
- 1/2" background
- Band B (middle) ↑
- reverse



* - a circled design was eliminated by pick up and weaving with background color

X = areas picked up and woven with a contrast color