

March 14, 1997

Dear Bound Weave Study Group,

Inclosed you will find drafts for two projects. I'm spring cleaning the weaving details from the past and present to share with you. The first draft sheet is of a pillow set which is self explanatory with a color photograph photocopied. Although the pillows were my first Krokbragd try, I didn't take a photograph until recently. The blue/green photographs (Krokbragd plus pickup = Danskbrogd) is my latest weaving with a draft, detail, and worksheet.

Jan's worksheet inspired me to include my worksheet too. I found it interesting to compare the similarity and differences of approaches. It gives you an idea of how I work and keep records. I included a small sketch of my beginning conception for the weaving on the left side of the worksheet. After using the six shaft draft last time, I chose to return to the traditional three shaft Norwegian draft using pickup. I feel it is easier to concentrate on the weaving with the design details in mind without the complexity of using six shafts. Yes, it is definitely slower but what is time for when it comes to weaving bound weave? Of course that doesn't preclude my returning to it in the future.

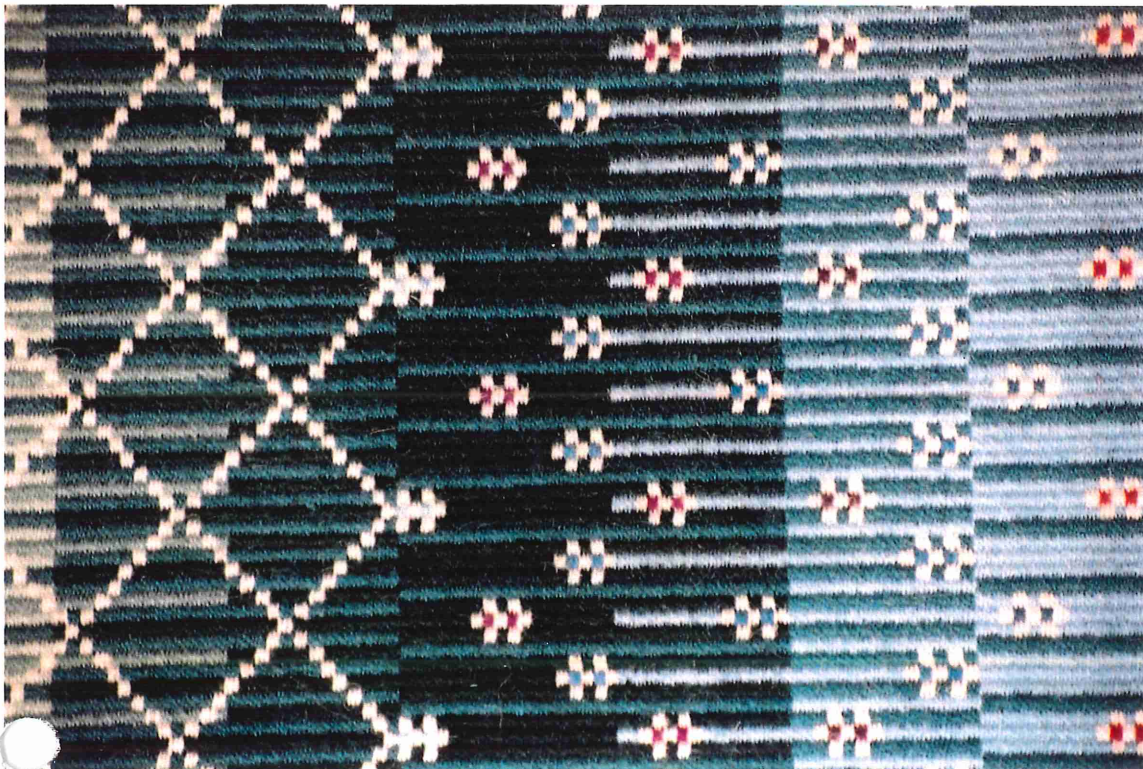
The draft information has a full size (a little of each side cropped off) photograph showing the crisscross of the snow flakes. The closeup photograph below shows a color detail. I wanted my woven snowflakes to show the reflective colors as seen through the skyscape and landscape.

I respect the sharing of weaving information and the growth of knowledge gained from being a member of this group. Maybe it takes a group to raise a weaver!

Best wishes to each of you,

Sally Scott

email address: salscott@pioneerplanet.infi.net



Top

Detail

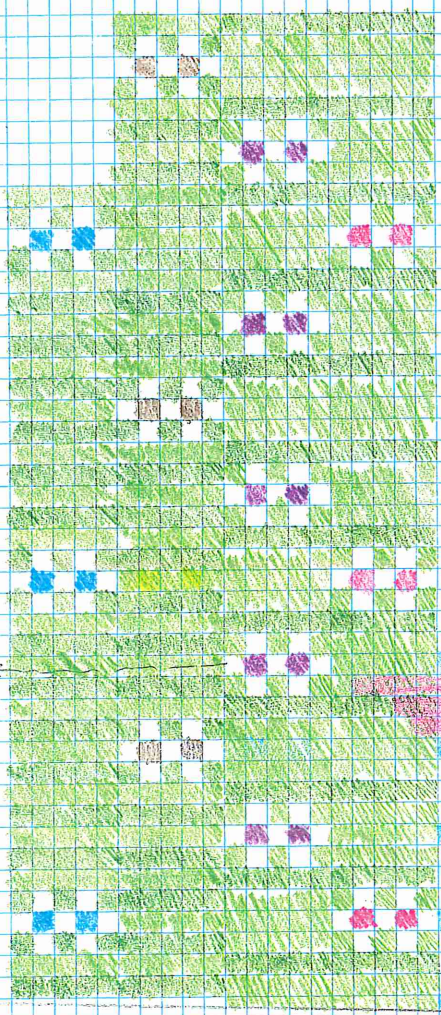
1
 2
 3
 4
 5
 6
 7
 8
 9
 10
 11
 12
 13
 14
 15
 16
 17
 18
 19
 20
 21
 22
 23
 24
 25
 26
 27
 28
 29
 30
 31
 32
 33
 34
 35
 36
 37
 38
 39
 40
 41
 42
 43
 44
 45
 46
 47
 48
 49
 50
 51
 52
 53
 54
 55
 56
 57
 58
 59
 60
 61
 62
 63
 64
 65
 66
 67
 68
 69
 70
 71
 72
 73
 74
 75
 76
 77
 78
 79
 80
 81
 82
 83
 84
 85
 86
 87
 88
 89
 90
 91
 92
 93
 94
 95
 96
 97
 98
 99
 100

WARP 30" W X 70" L SIEVE TWINE

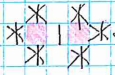
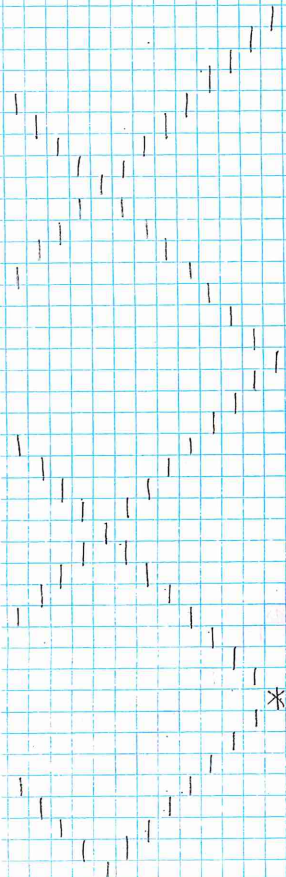
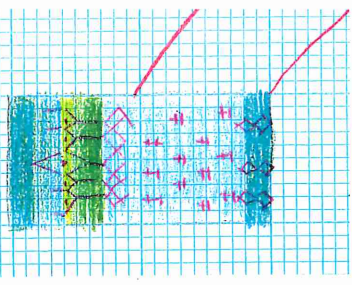
600 L X 20 = 120+ FLOATING SEWAGES = 120 L

FINISHES MEASUREMENTS 19.5" X 30"

* START AND STOP IN SAME COLOR



1997



ALTERNATE CENTER
 COLORS:
 WARM + COOL
 RUN DARKEST
 TOWARDS LIGHTEST
 AND
 LIGHT TO DARK
 PROGRESSION.
 DOUBLE ZIG ZAG
 IN FUR UP
 DARKER LIGHT
 IN FUR DOWN
 TO SKY BLUES TOP
 TREES IN MIDDLE

1
 2
 3
 4
 5
 6
 7
 8
 9
 10
 11
 12
 13
 14
 15
 16
 17
 18
 19
 20
 21
 22
 23
 24
 25
 26
 27
 28
 29
 30
 31
 32
 33
 34
 35
 36
 37
 38
 39
 40
 41
 42
 43
 44
 45
 46
 47
 48
 49
 50
 51
 52
 53
 54
 55
 56
 57
 58
 59
 60
 61
 62
 63
 64
 65
 66
 67
 68
 69
 70
 71
 72
 73
 74
 75
 76
 77
 78
 79
 80
 81
 82
 83
 84
 85
 86
 87
 88
 89
 90
 91
 92
 93
 94
 95
 96
 97
 98
 99
 100