

22 April 1997 from Syvilla Tweed Bolson
512 Locust Road
Decorah, IA 52101-1002
319-382-3711
e-mail: smtweed@salamander.com

Dear members of the Danskbrogd study group:

I have been encouraged by some in our group to send pictures of the two church hangings that were the largest part of my weaving in 1994.

The technique was Danskbrogd on six shafts. The draft has appeared in several letters from our members including mine from last year.

Warp: #18 fiskgarn/seine cotton/ double twisted cotton
Weft: Raumagarn Ullspissgarn, Prydvevgarn doubled, and Åklegarn
Sett: 4 ends per inch

Theme: **Creation**

Darkness and Light
Sea, Land, and Sky

The description of the weavings is enclosed. This page was and is still used as a church bulletin insert. The weavings hang in the United Methodist Church, Caledonia, Minnesota and were commissioned as a memorial by a family. I began designing in March 1994 and showed one piece at the Nordic Fest exhibition and finished the other one in time for dedication in December.

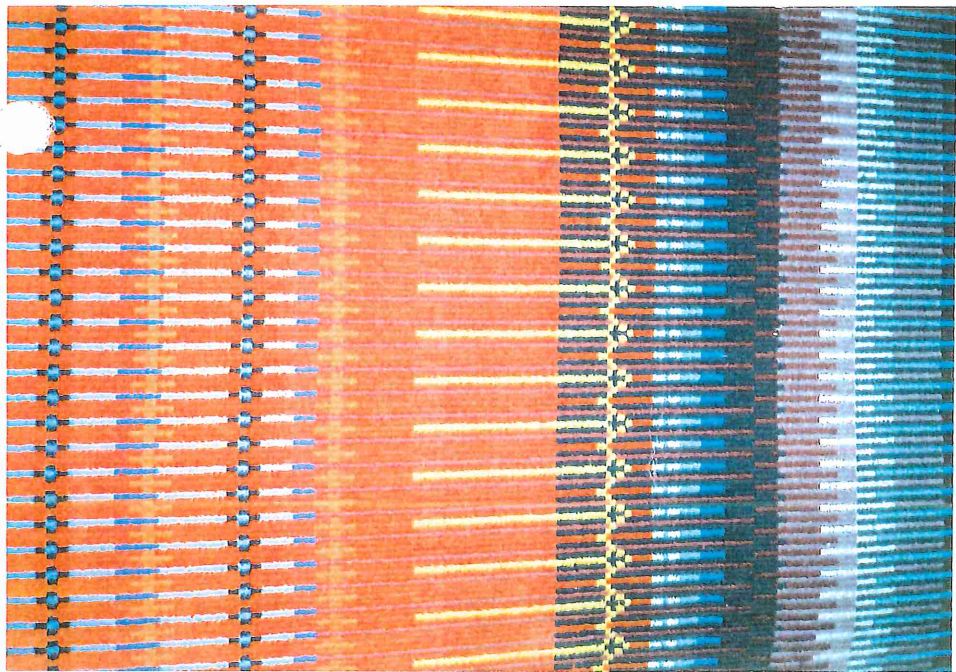
The seven crosses (gifts of the Holy Spirit) do not show real well in the photos, but they are easily seen in the church itself. There are special lights on the weavings which help show some of the smaller motifs.

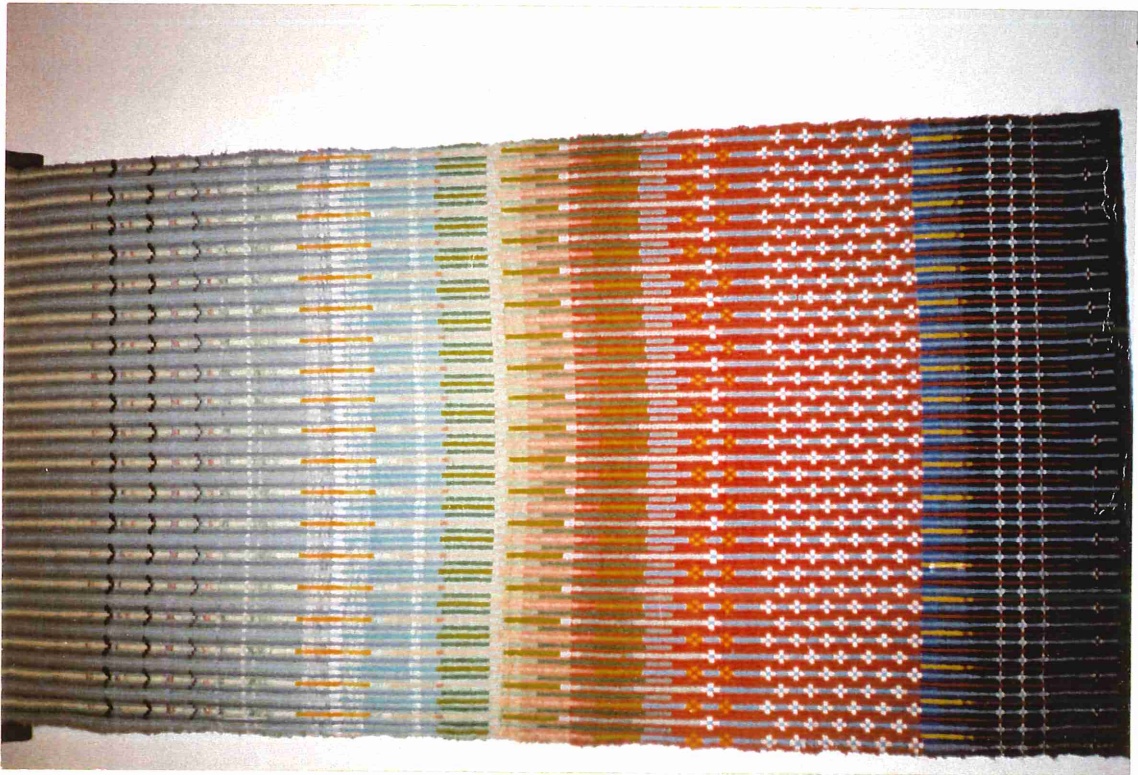
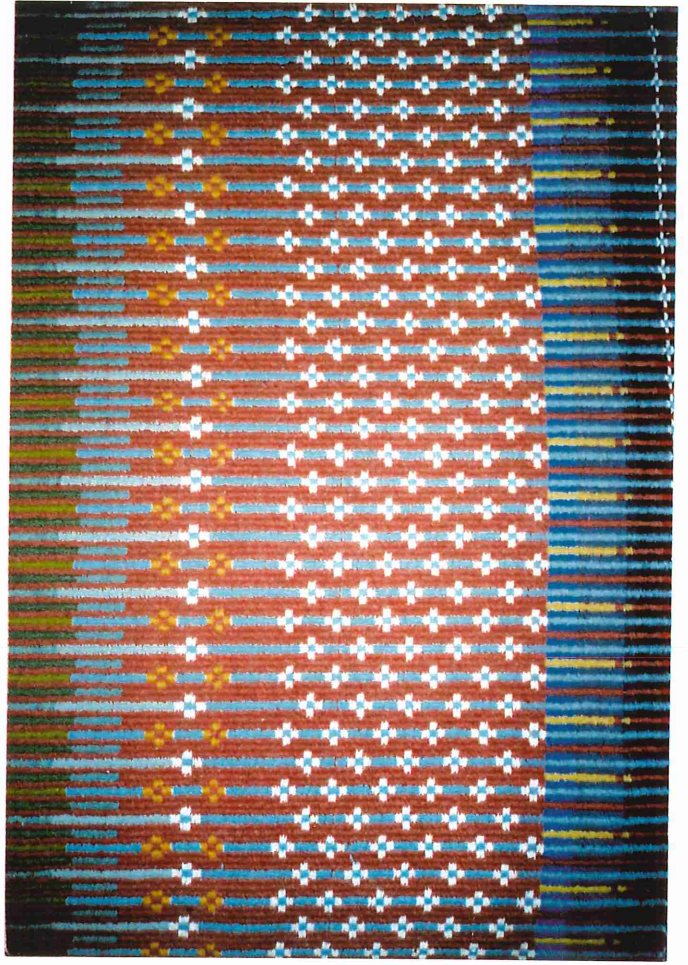
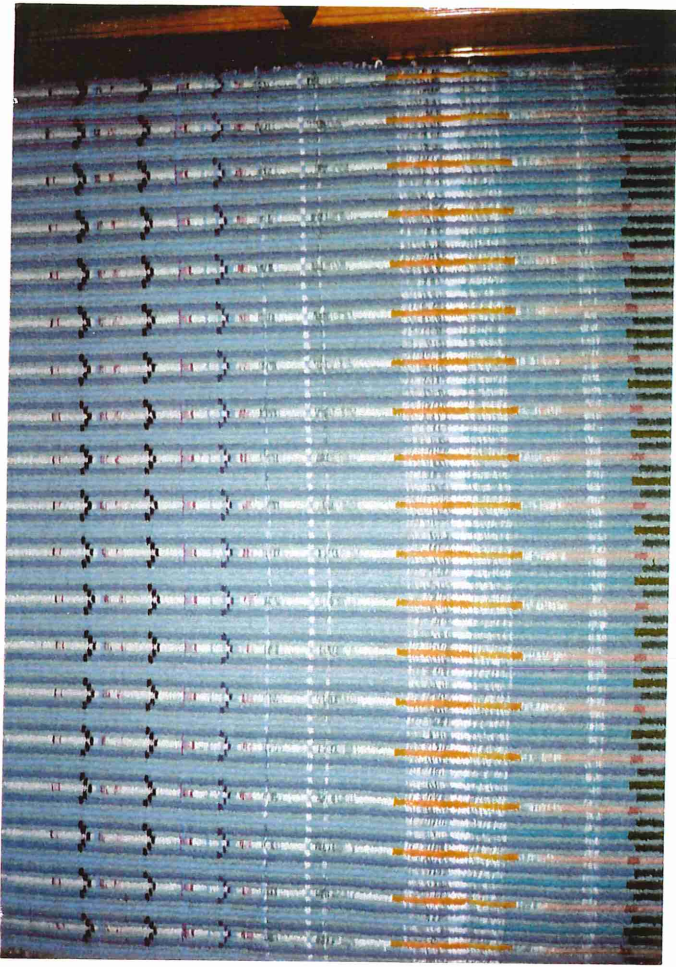
These weavings were actually my first try at Danskbrogd on six shafts. I had tried the three shaft with a pick-up stick on a small piece. I find the six shaft with the nine pedal tie-up so easy to use. I did both these weavings on the six shafts using only the pedals and no extra pick-up work.

Syvilla Tweed Bolson

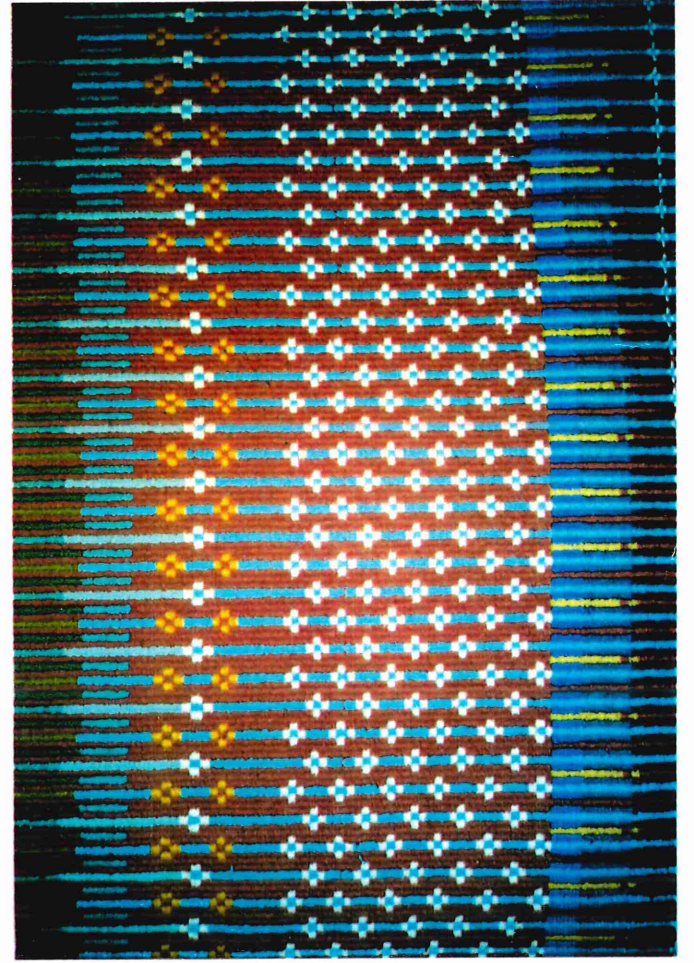
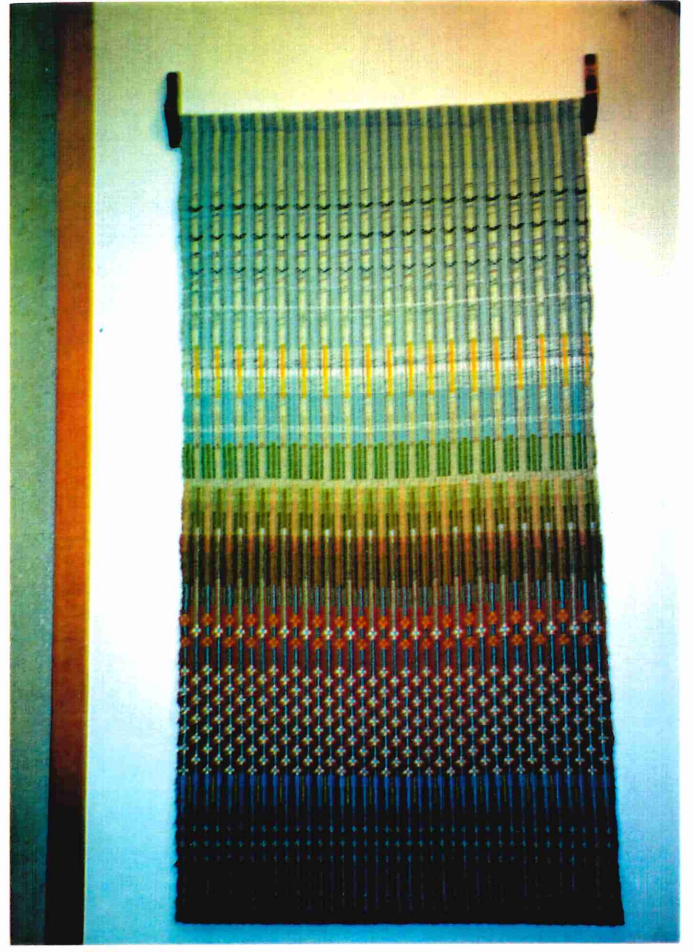
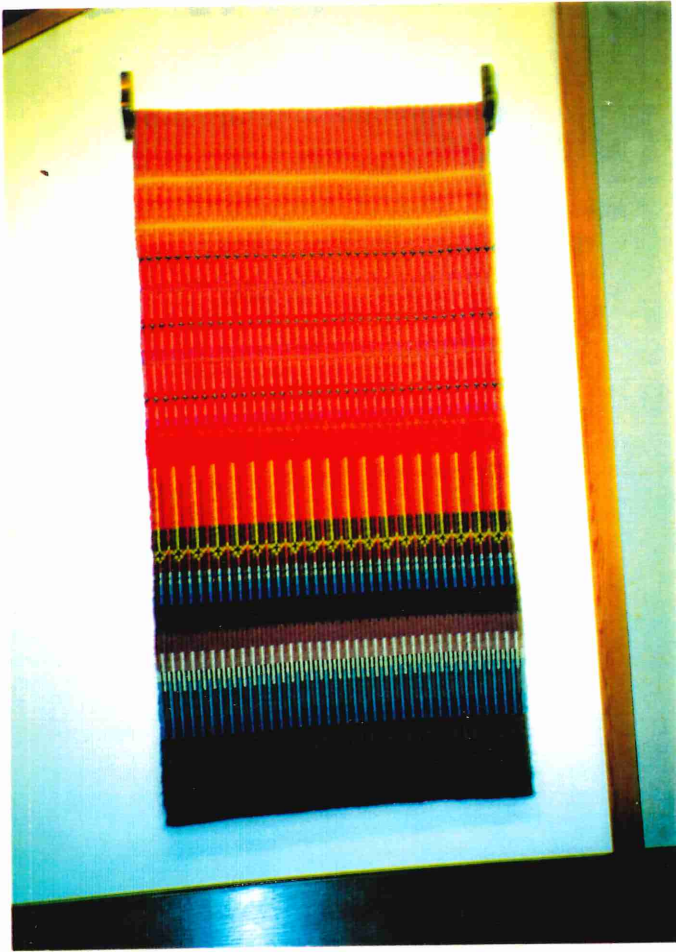


Darkness and Light 3'x6'





3' X 6' finished
Sea, Land, and Sky



CREATION

DARKNESS and LIGHT SEA, LAND, and SKY

In the beginning, God created the heavens and the earth. This is the magnificent theme on which the Bible begins. God stands at the beginning of all things as Creator.

God has greatly honored us by giving us this earth and by creating all of this world for us to use in our journey through life. Psalm 104:24 "God has created all of this world and it is wonderful to behold!"
O Lord, how manifold are your works!"

The basis for the CREATION tapestries is the story of creation as recorded in the first chapter of Genesis and its concept in the spiritual experiences of the members of the United Methodist Church, Caledonia, Minn.

*Church hand-out
as insert in
bulletin*

The heavens and the earth were created in an atmosphere of love and harmony. The artist tells the story of creation using a geometric order and pattern in the art of designing the tapestries.

The tapestry, DARKNESS and LIGHT, shows deep blue and varied shades of purple which depict darkness and the emptiness of the world.

Lighter colors follow giving a hint of brightness and leading to the golden galaxy of light stretching towards the heavens. Within this galaxy, darkness and light are completely separated as light overcomes darkness.

The dark crosses at the bottom of the galaxy are surrounded by the gold color and signify God in creation.

The bright colors appear in all their glory in God's firmament portraying the sunrise and sunset. The rows of crosses are shown in muted colors and symbolize the seven gifts of the Holy Spirit. The presence of God's power is evident in this tapestry.

The tapestry, SEA, LAND, and SKY, combines the mystery of the blue water with the majesty of the sky.

The terra cotta of the land, the greens of the trees and grasses, and the delicate colors of the flowers remind us of our responsibility of stewardship.

The blues of the sky blend into the horizon creating tranquility. The vertical lines in white lead to the top of the tapestry. They signify hope, purity, and peace. The white clouds, with rays of sun peeking through, appear to be the fulfillment of nature at its best.

The figures in the sky represent birds of the air in flight. Birds sing! Let us glorify God in creation by singing GLORY all the days of our lives!

Designed and handwoven by SYVILLA TWEED BOLSON
Decorah, Iowa December 1994

Artist's statement: The tapestries were designed with the intention of enhancing the worship experiences of the members of this church. They were designed as a pair but each could be experienced on its own. Each has a strong presence and intensity.

Symbols of nature and of God invite the viewer to think beyond what is directly seen in the tapestries. No symbol can even adequately express the true depth of our spiritual truths. But symbols are our only means of speaking about things which are "spiritually discerned".