

1- Gåseberg

MATERIALER

Renning: bomullsgarn nr 12/6, sort

Innslag: Rauma Åklegarn

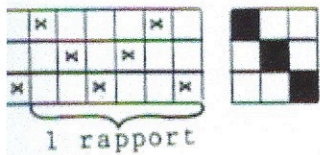
■: Svart, nr. 710

◆: Lilla, nr. 775

○: Grønn, nr. 790

VEVSKJE: 25-10, en tråd i hovel,
en tråd i tind

HOVLING OG NEDKNYTTING



Materials:

Warp: Black cotton seine twine, $12/16$,
black

Wef+ : Rauma åklegarn

■ Black, #710

◆ purple, #775

○ green, #790

Reed: 25-10 (25 dents in 10 cm, about 6 epj)
one end per dent

ger.

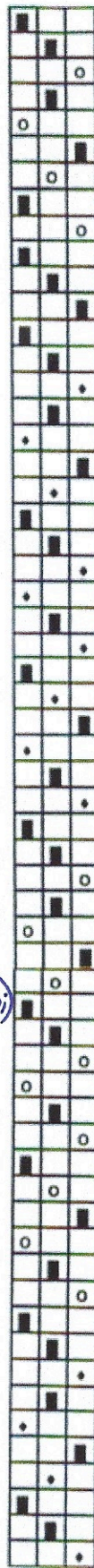
r kopiert.

3 cm bunnfarge



Bord IV

3 cm bunnfarge



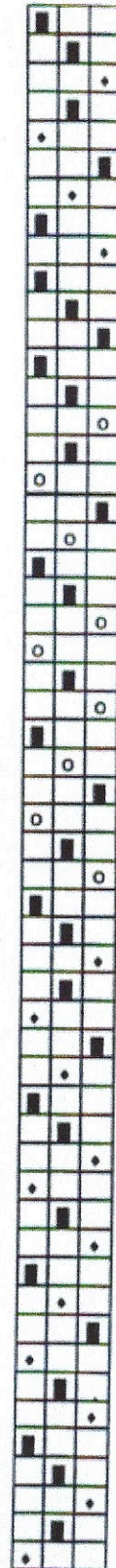
Bord III

3 cm bunnfarge



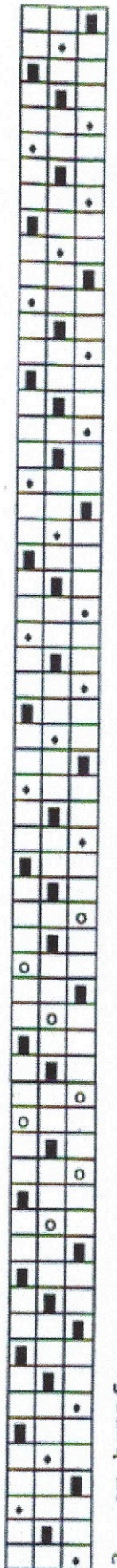
Bord II

3 cm bunnfarge



Bord I

3 cm bunnfarge



1 Gåseberg

