



# Nordre Gjellerud.

6

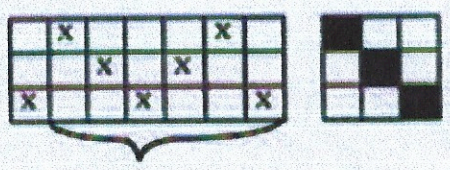
## MATERIALER

Renning: bomullsgarn nr. 12/6, sort  
Innslag: Rauma Åklegarn

## FARGER

- : Sort, f. nr. 710
- / : Mørk Rød, f. nr. 744
- ✕ : Lys Rød, f. nr. 735
- ◆ : Rød, Spezialfarget
- : Grønn, Spezialfarget

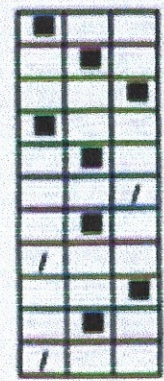
## HOVLING OG NEDKNYTING



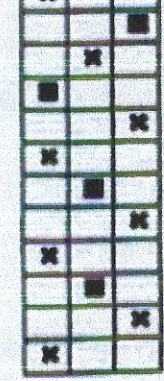
I rapport

# Bord III

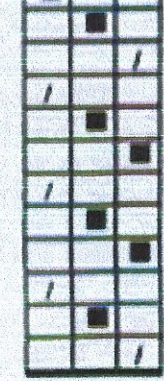
4 cm 710 mellom hver bord



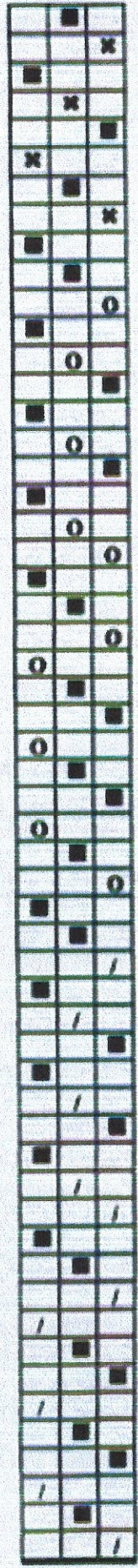
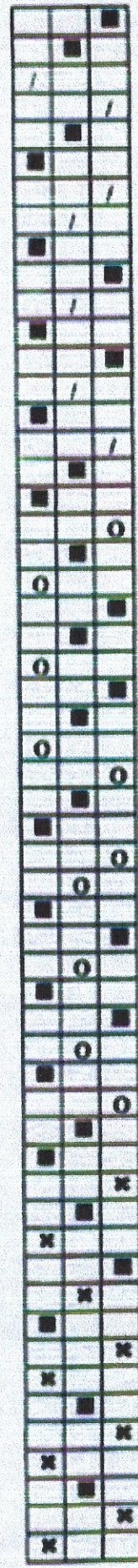
3 2 1



3 2 1



3 2 1





⑥ Nordre Gjellerud